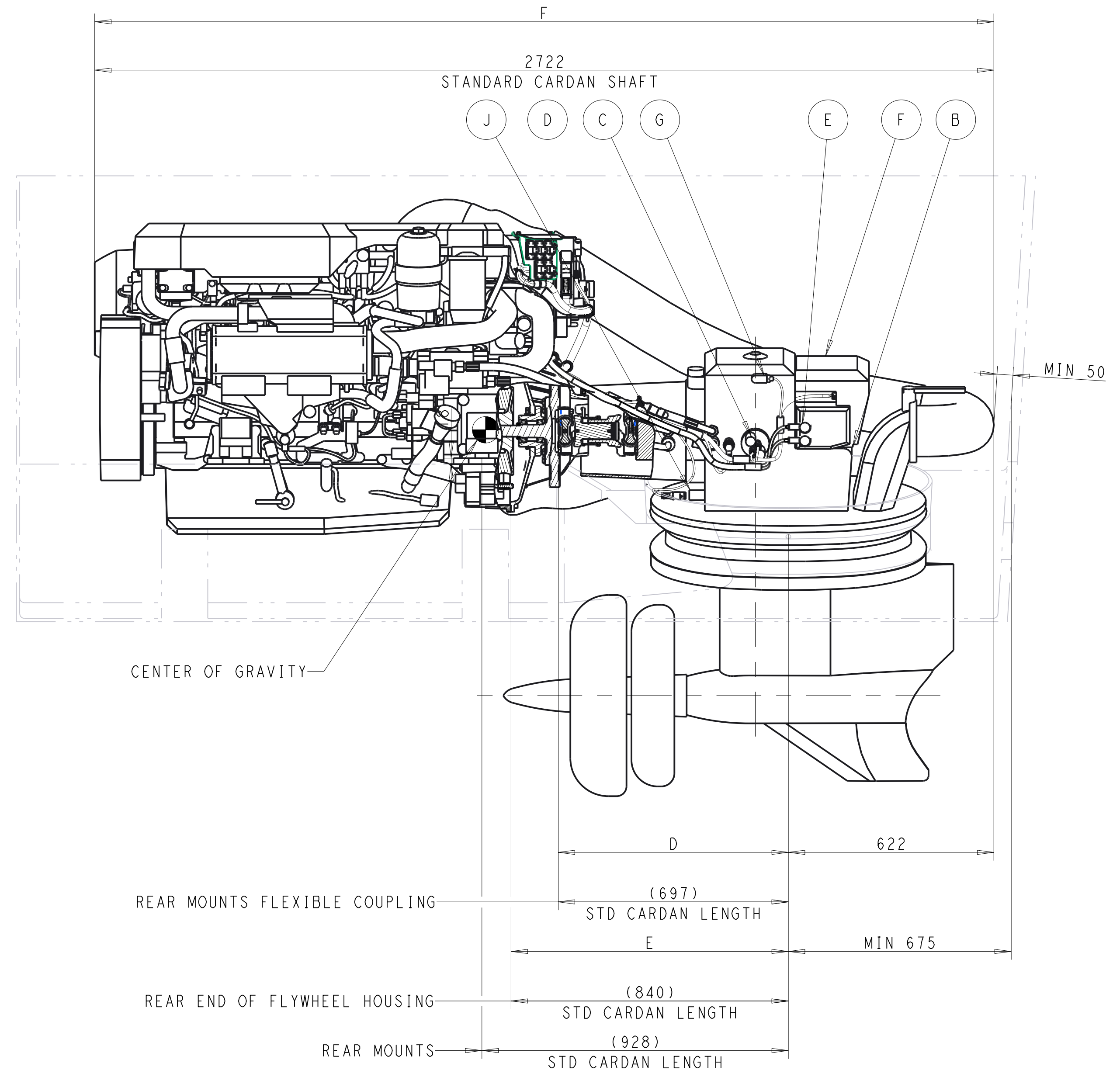
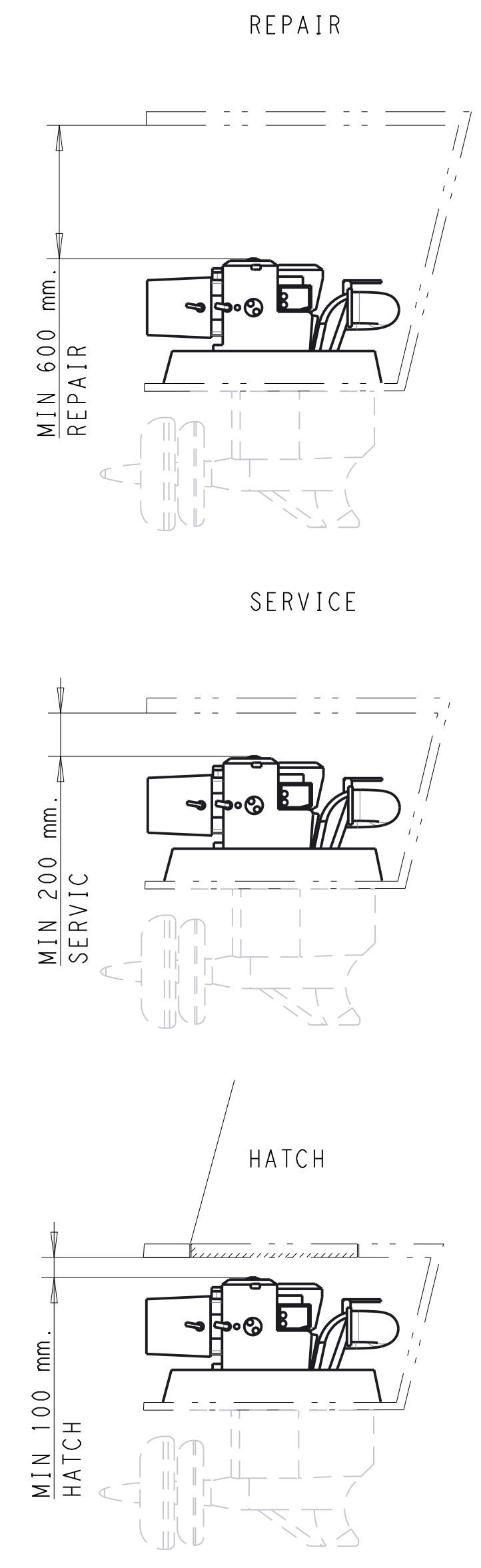
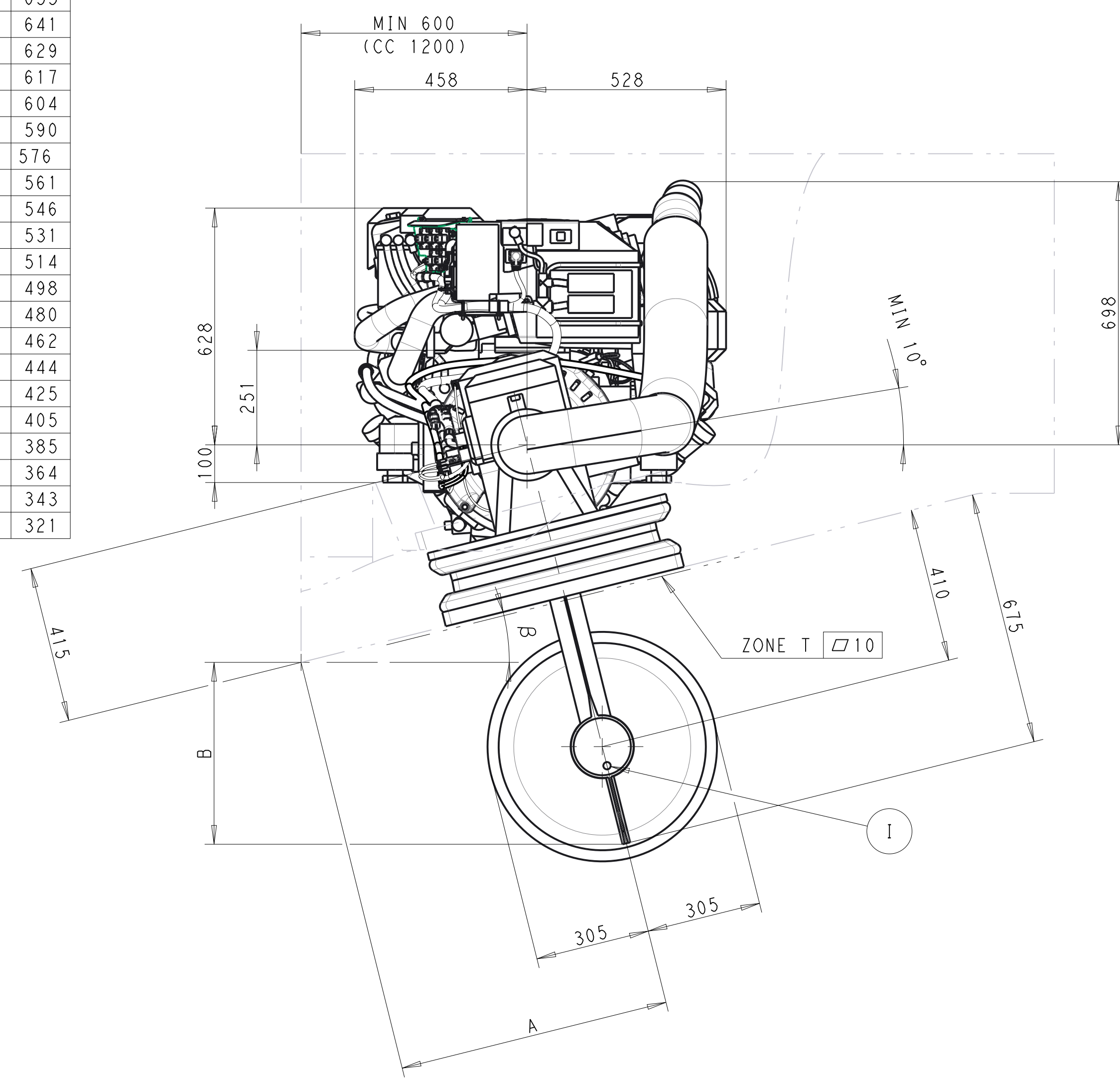
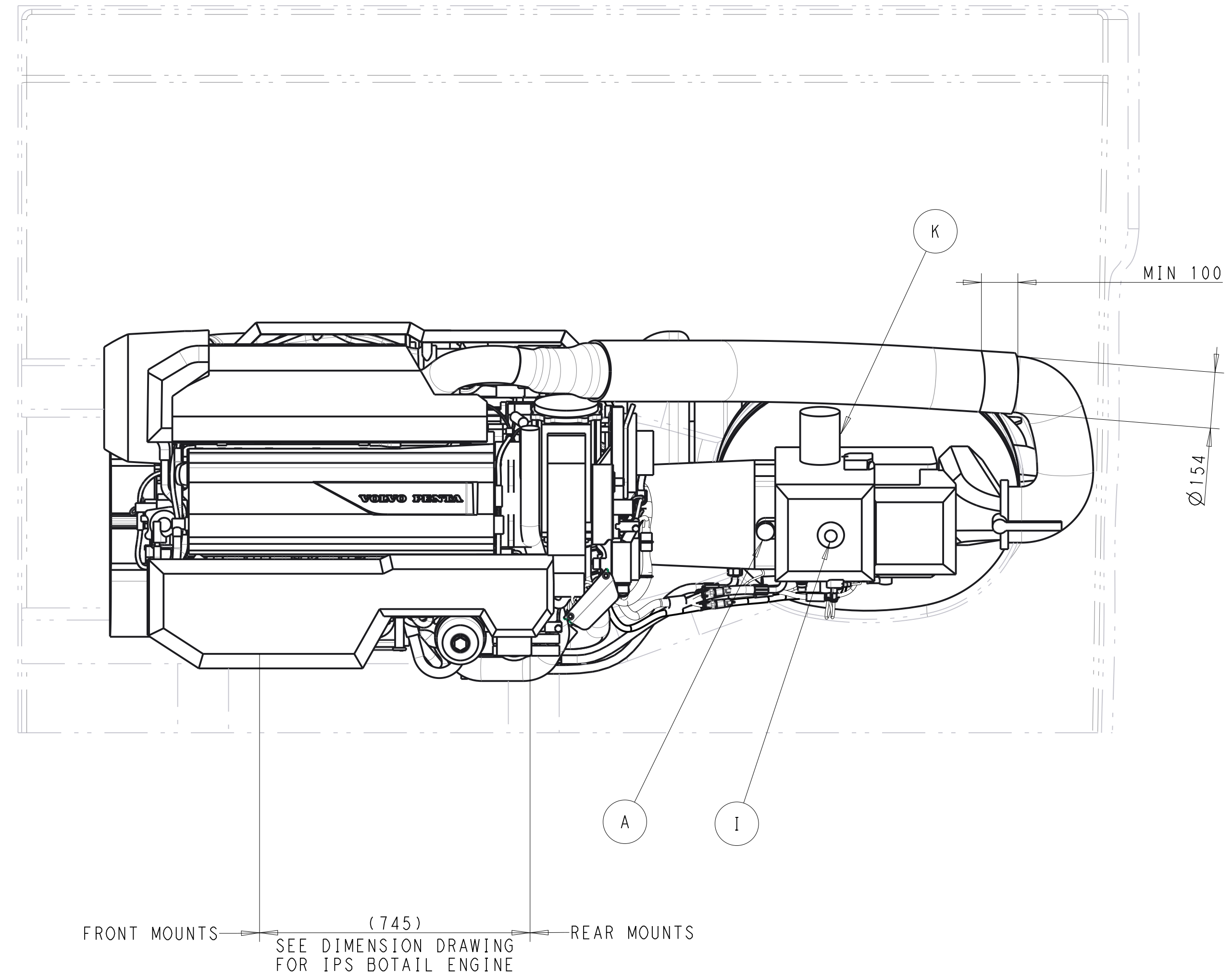
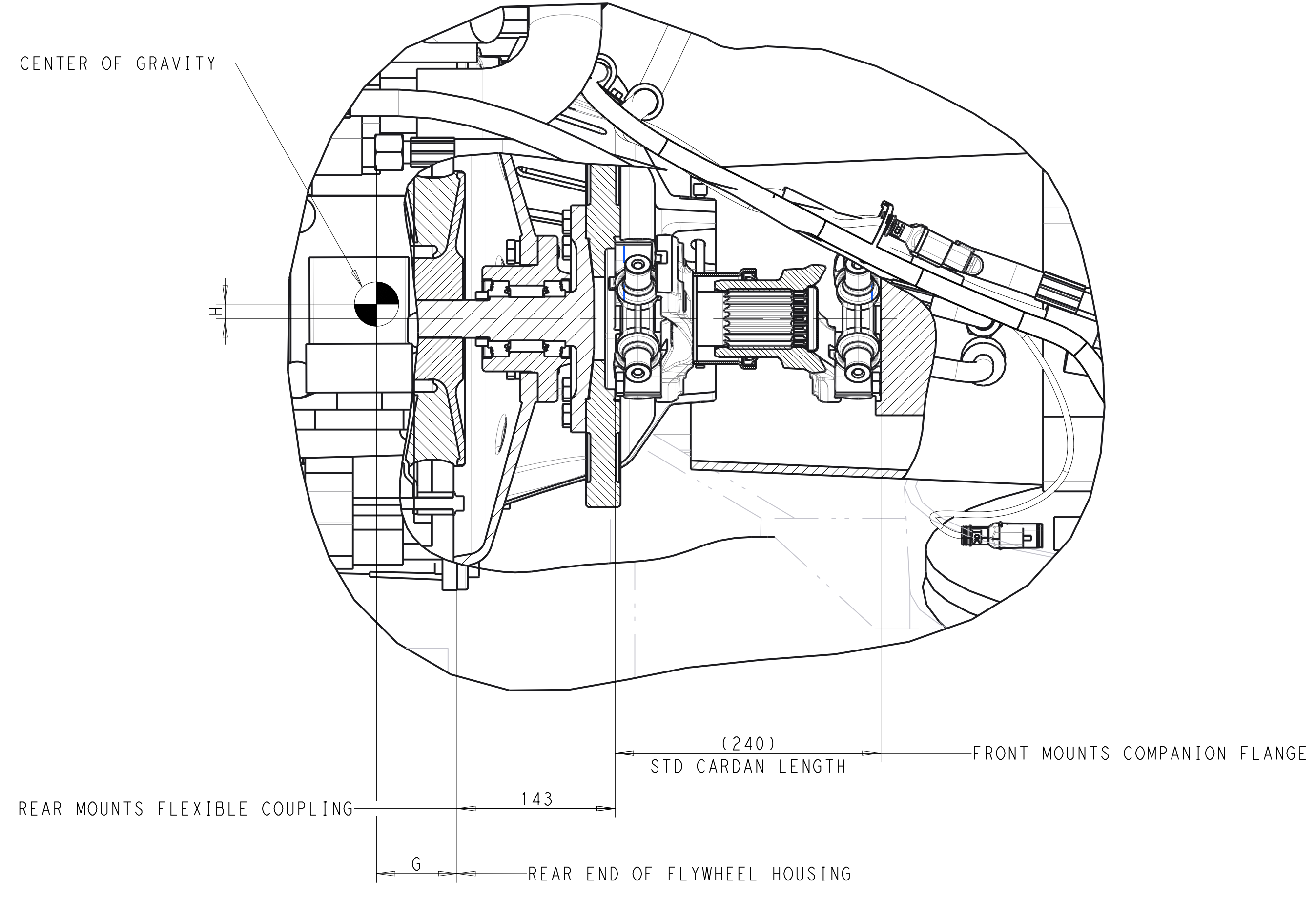


B°	A	B
0	600	675
1	607	664
2	615	653
3	623	641
4	630	629
5	639	617
6	649	604
7	655	590
8	664	576
9	673	561
10	682	546
11	692	531
12	702	514
13	712	498
14	722	480
15	732	462
16	743	444
17	754	425
18	766	405
19	777	385
20	790	364
21	802	343
22	815	321



CARDAN LENGTH	D *	E	F	G	H	TOTAL WEIGHT **
STD 240±10mm	687-707	830-850	2712-2732	87	13	1442 KG
750±50mm	1157-1257	1300-1400	3182-3282	-86	13	1448 KG
1150±50mm	1557-1657	1700-1800	3582-3682	-222	13	1451 KG
1450±50mm	1857-1957	2000-2100	3882-3982	-324	13	1454 KG
1950±50mm	2357-2457	2500-2600	4382-4482	-497	13	1463 KG

* NOTE THAT THE LENGTH OPTIONS DO NOT OVERLAP.
 ** WEIGHT FOR INSTALLATIONPACKAGE (WET).



IPS UNIT

- (K) OIL FILTER
- (J) CONNECTION WATER IN OIL SENSOR
- (I) OIL DRAIN
- (G) CONNECTION RPM SENSOR
- (F) CONNECTION ELECTRICAL CONTROL
- (E) CONNECTION BATTERY POS. AND NEG.
- (D) CONNECTION OIL TEMP./PRESSURE
- (C) CONNECTION, SHIFT SOLENOIDES
- (B) OIL DIPSTICK GEAR BOX
- (A) OIL FILLER GEAR BOX

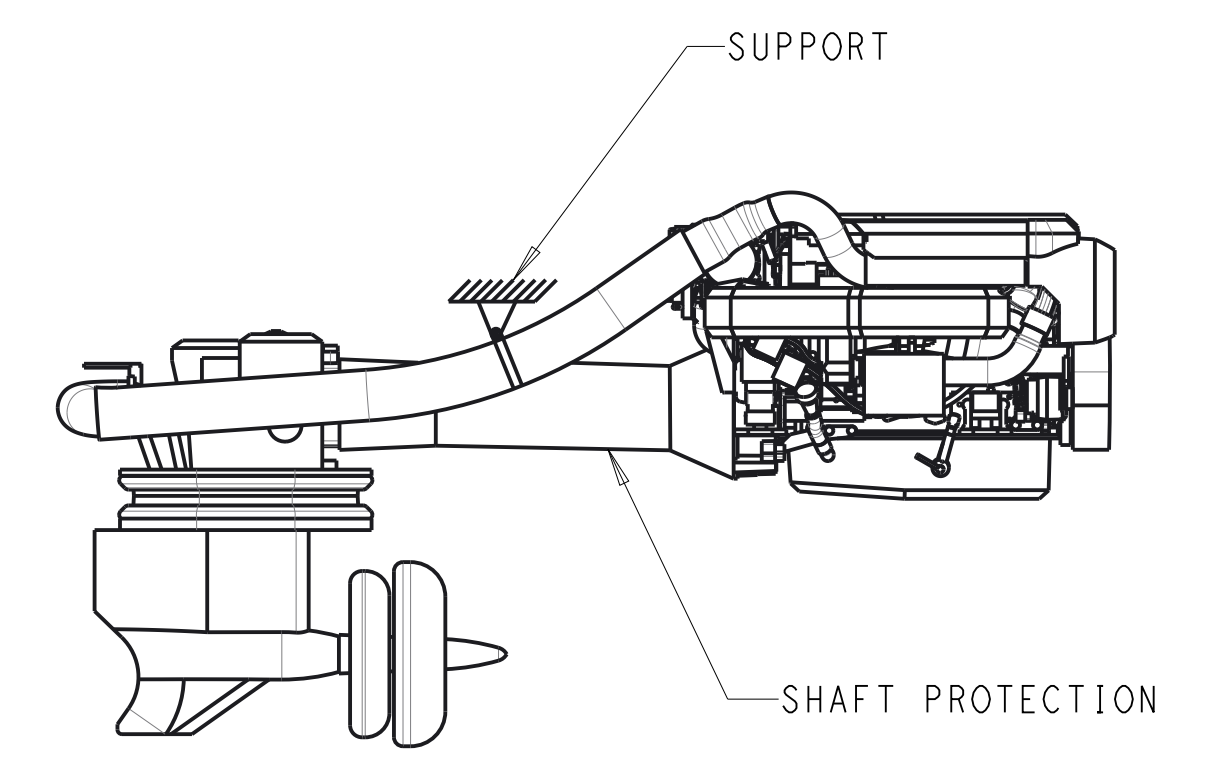
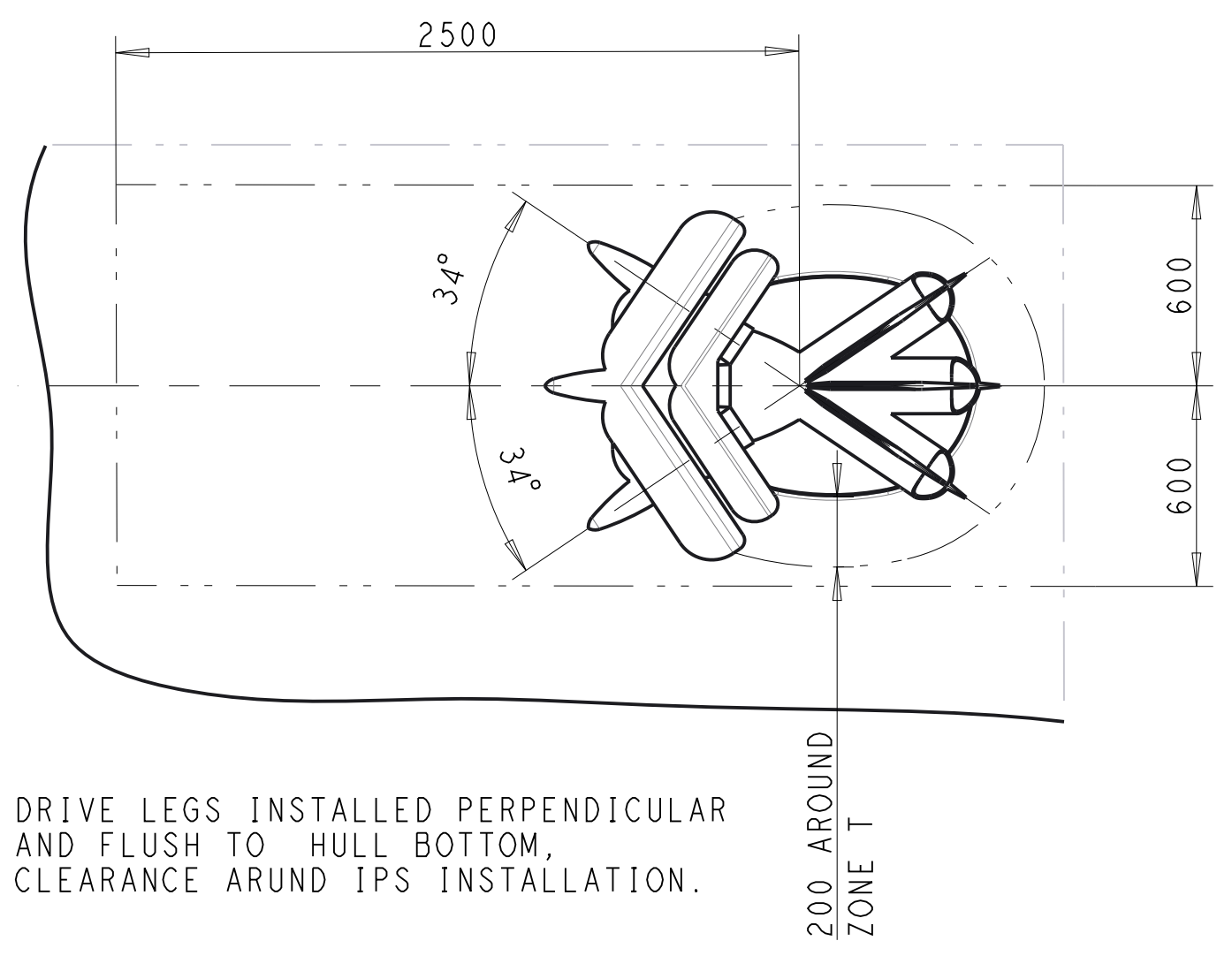
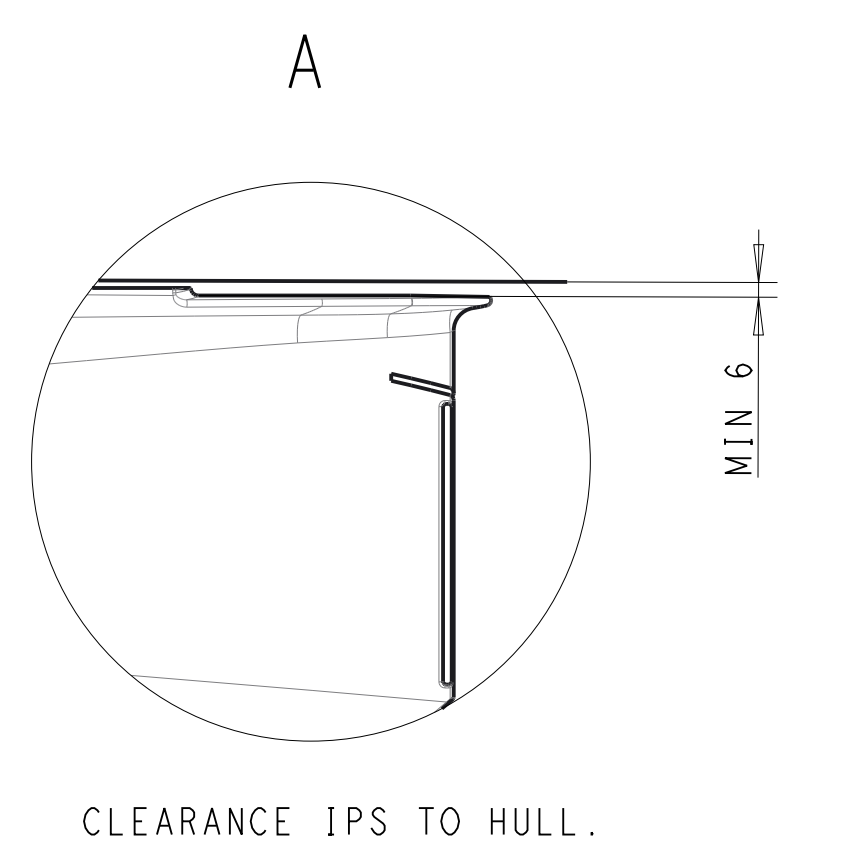
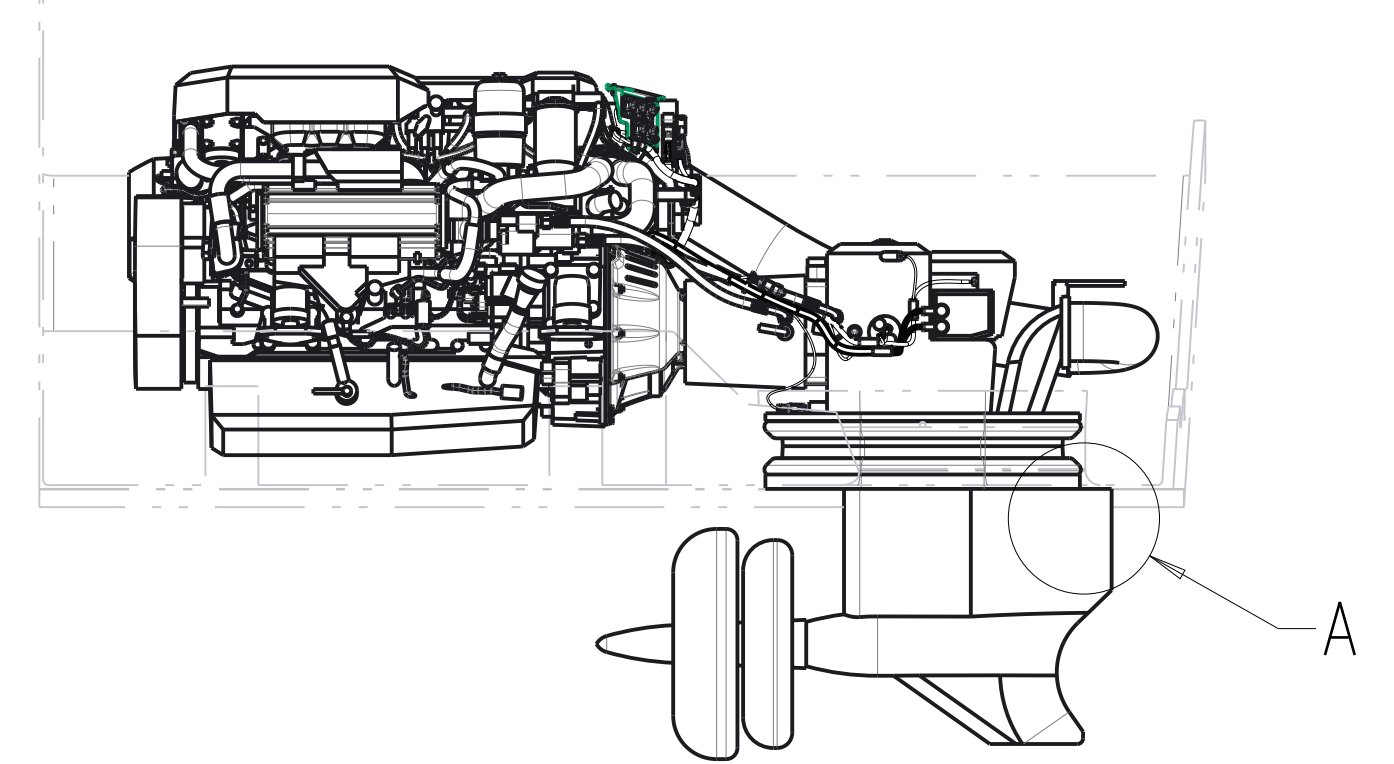
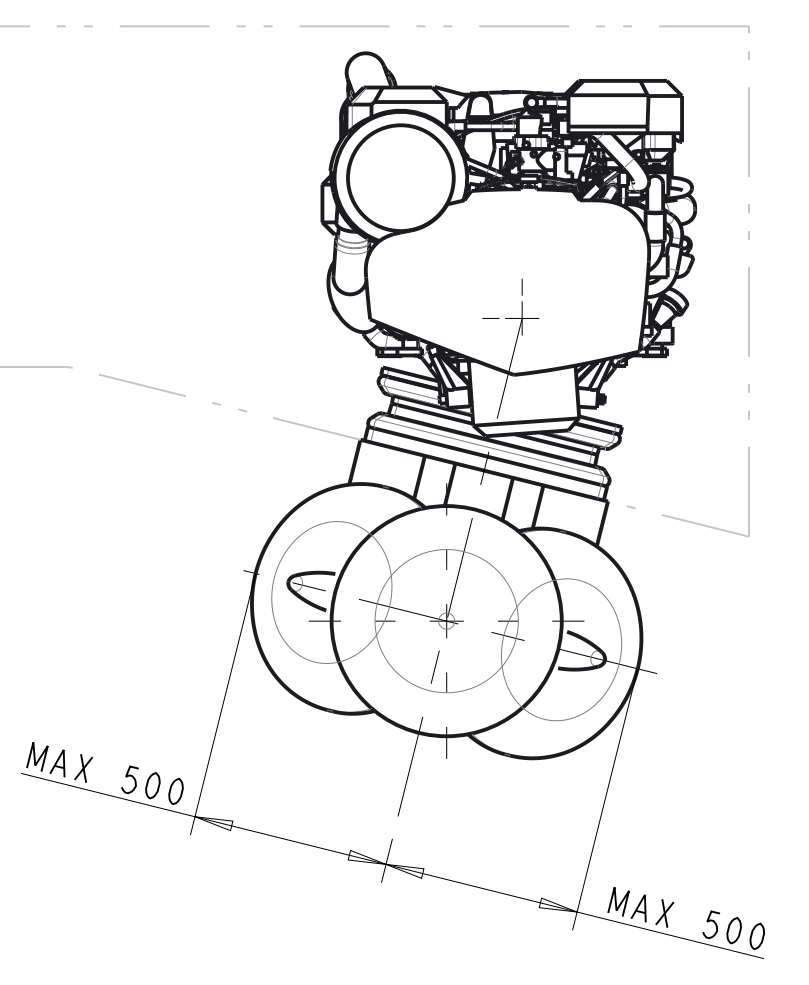
FOR EASY INSTALLATION, USE ENGINE/IPS BED INSTALLATION TOOL
 SCALE 1:10

ENGINE

SEE DIMENSION DRAWING FOR IPS BOTAIL ENGINE

THE WEIGHT OF THE EXHAUST SYSTEM MUST NOT LOAD THE EXHAUST RISER OR TURBO. THEREFORE, EQUIP THE EXHAUST SYSTEM WITH SUSPENSION OR SUPPORTS. IF THE LENGTH OF THE EXHAUST HOSE EXCEED 1500 mm.

SHAFT PROTECTION REQUIRED FOR EXTENDED INSTALLATION. NOT PROVIDED BY VOLVO PENTA.



DRIVE LEGS INSTALLED PERPENDICULAR AND FLUSH TO HULL BOTTOM. CLEARANCE AROUND IPS INSTALLATION.