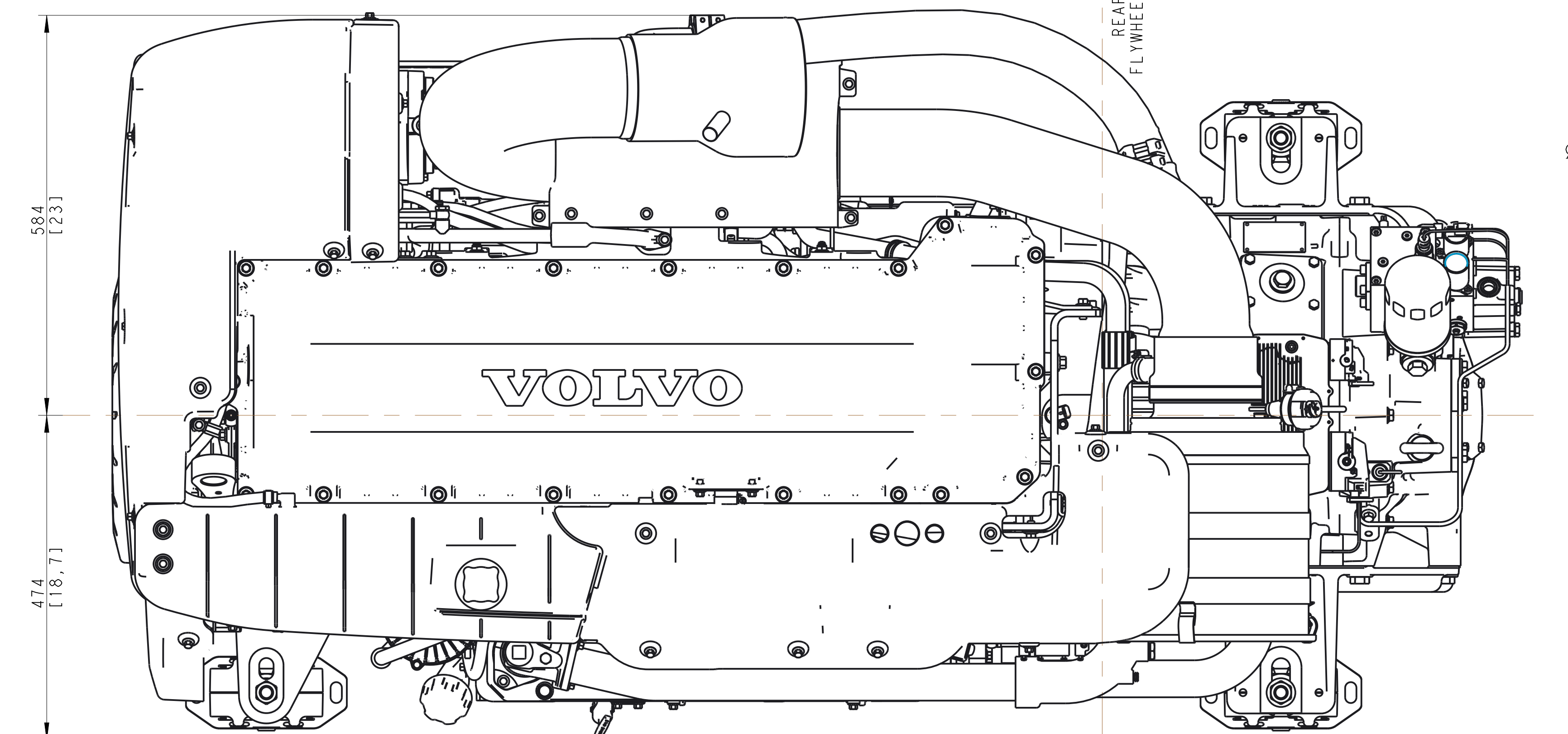
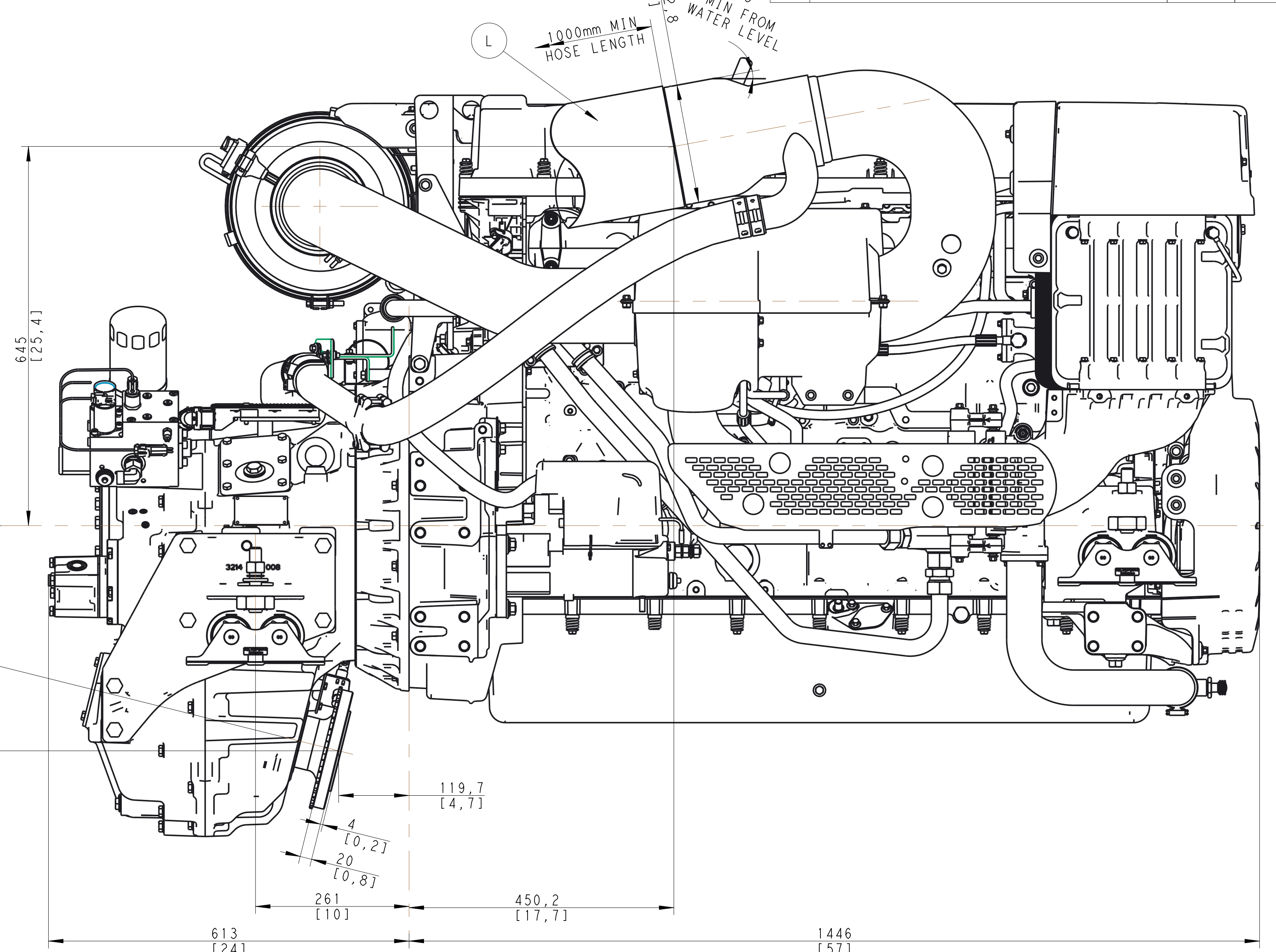
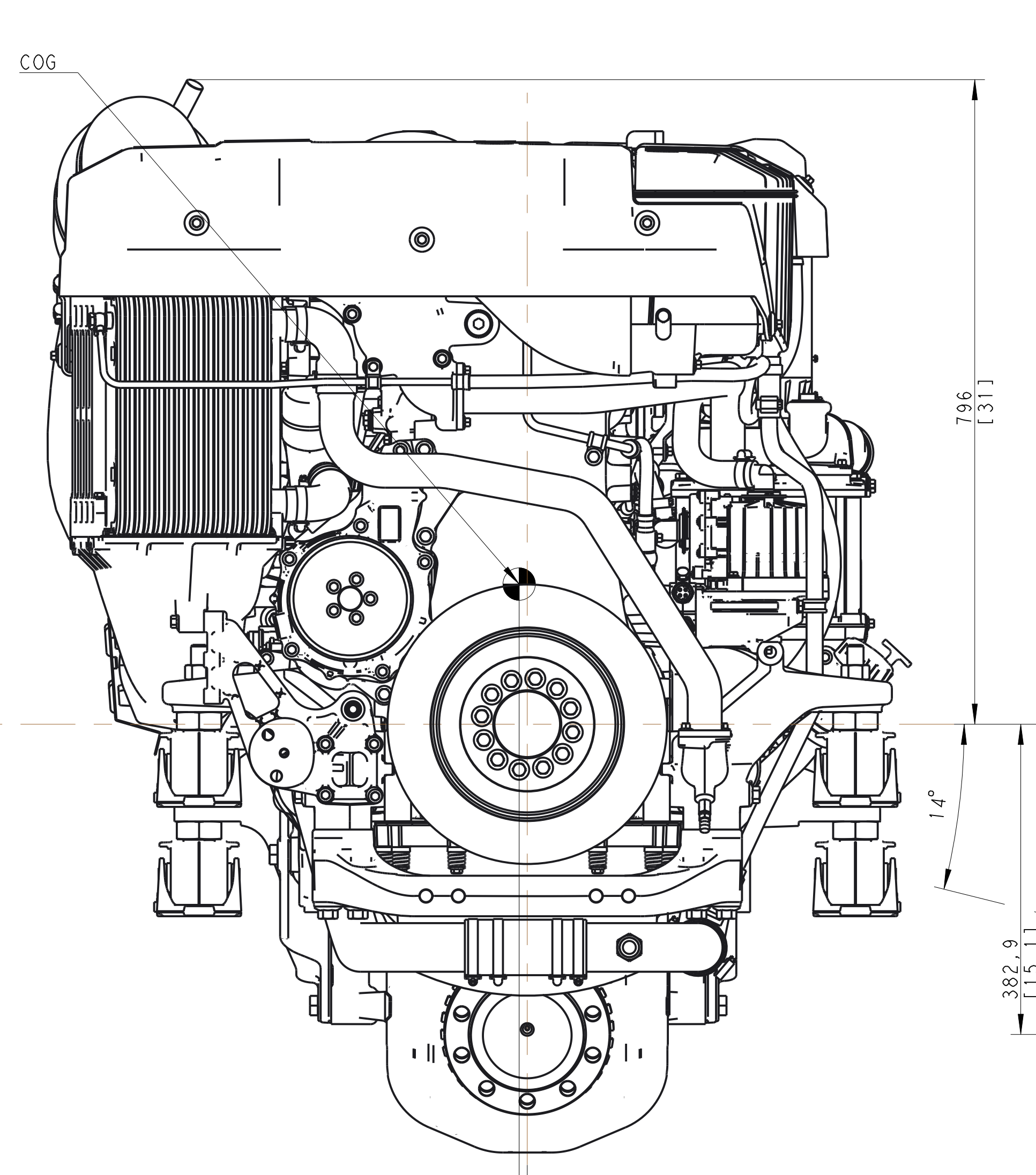
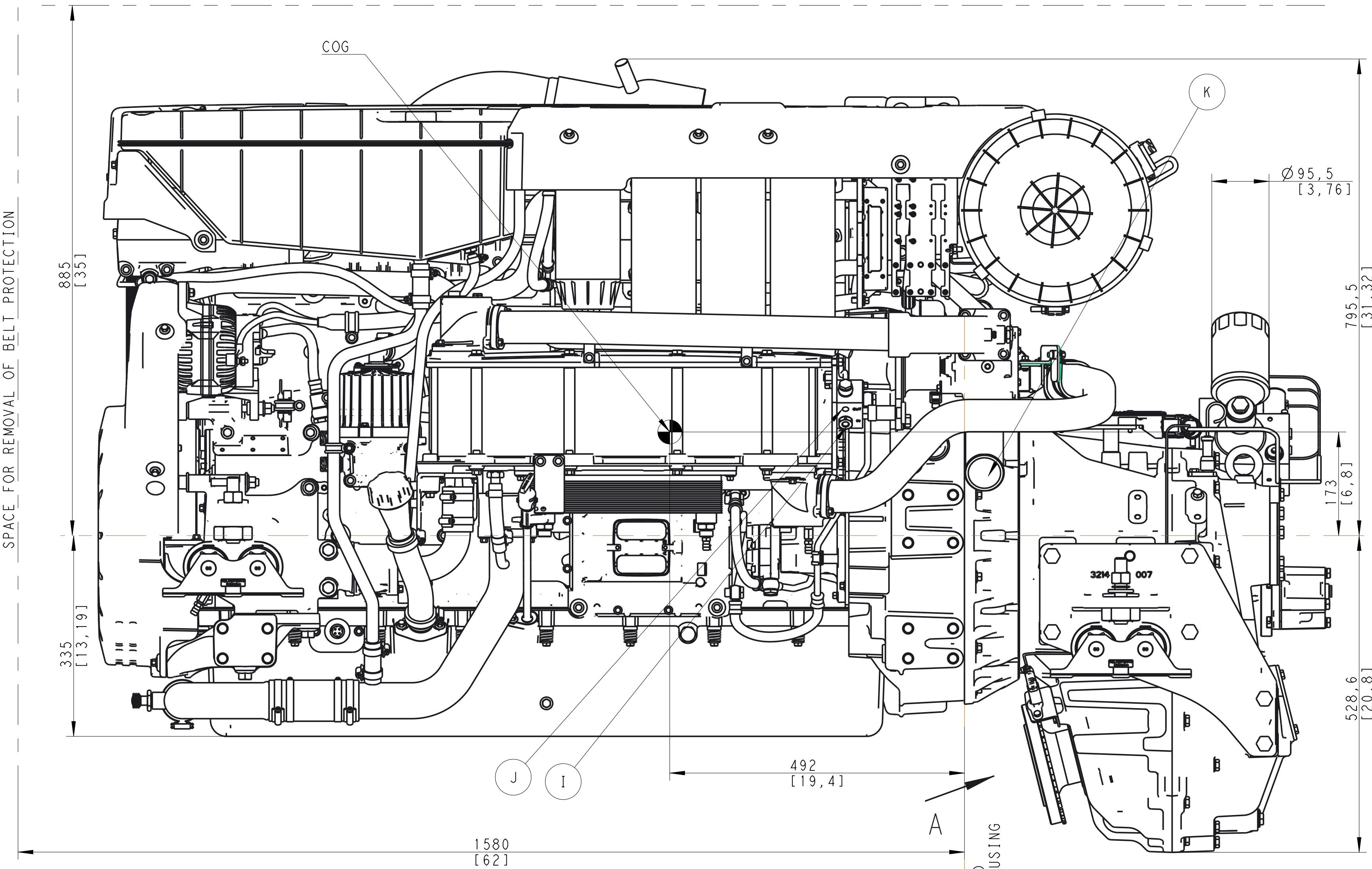
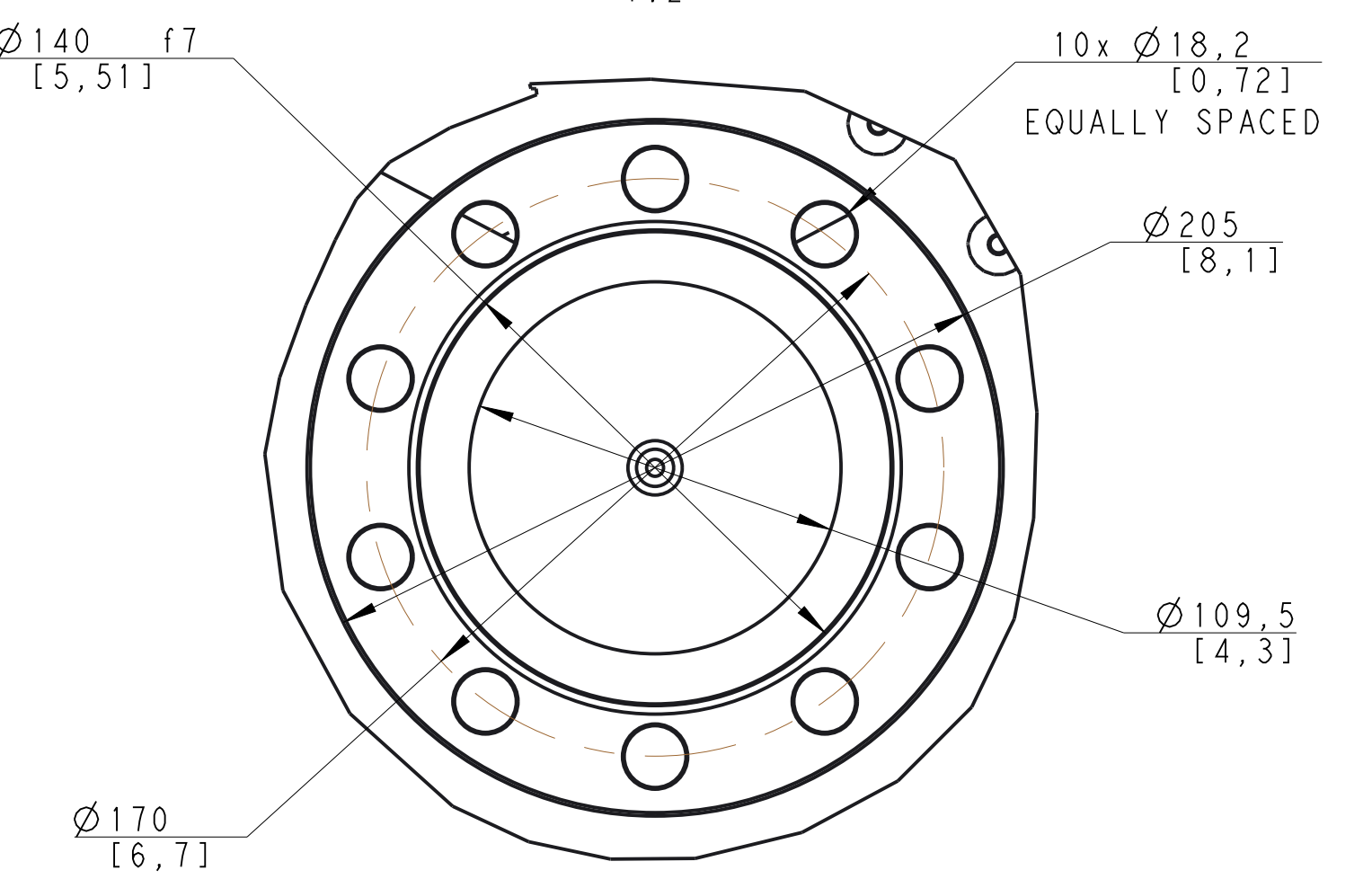


SPACE FOR REMOVAL OF VALVE COVER

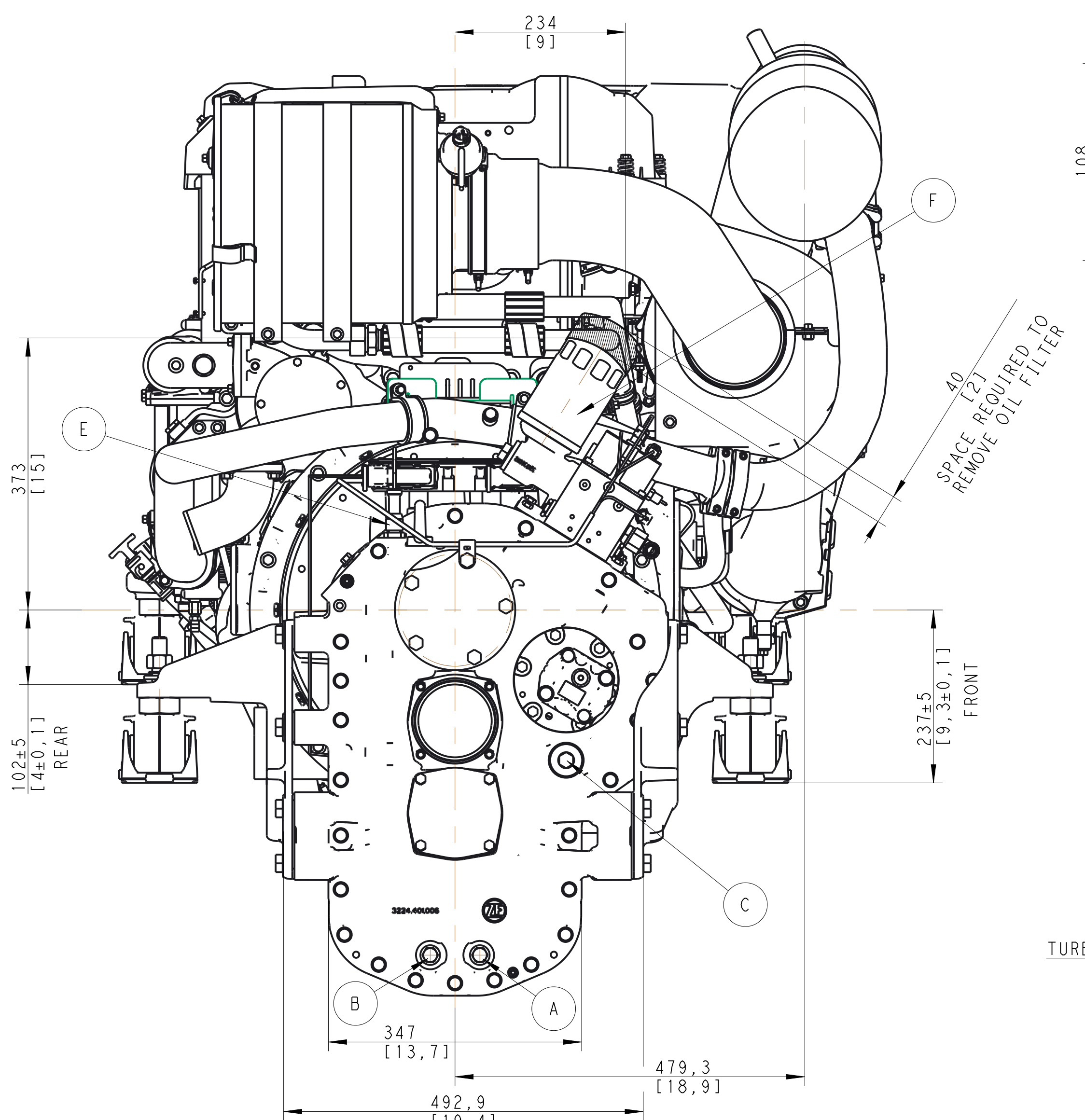
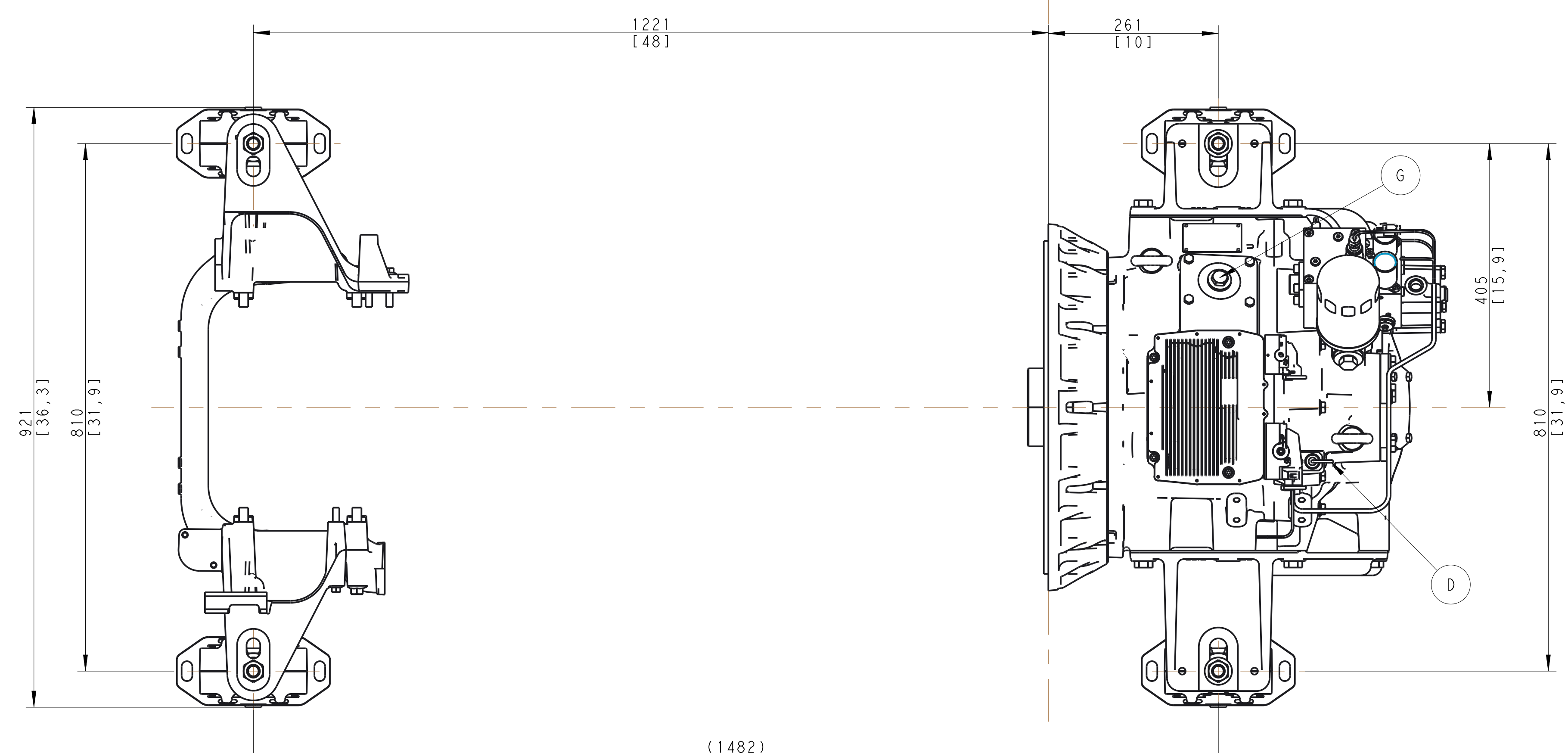
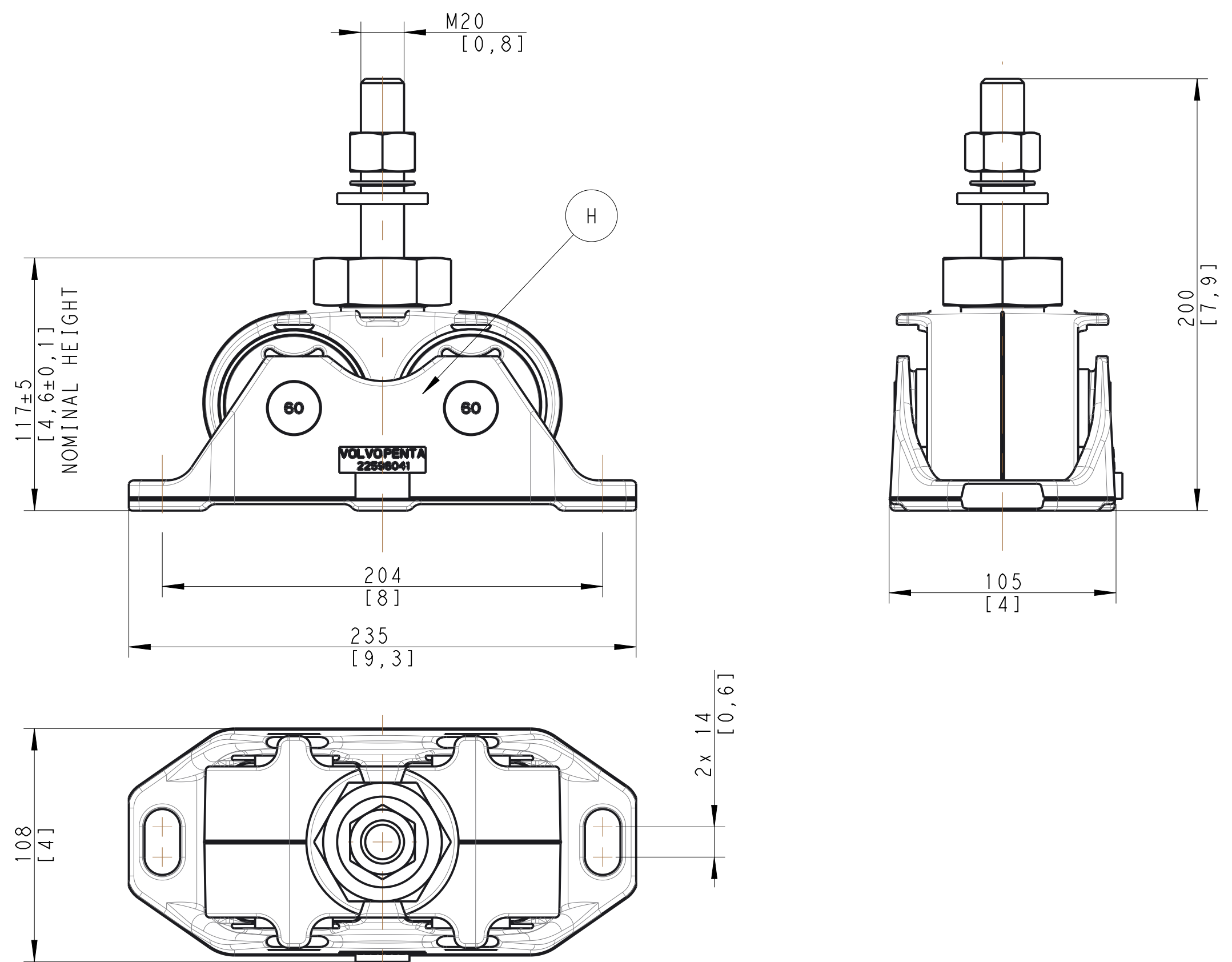


VIEW A

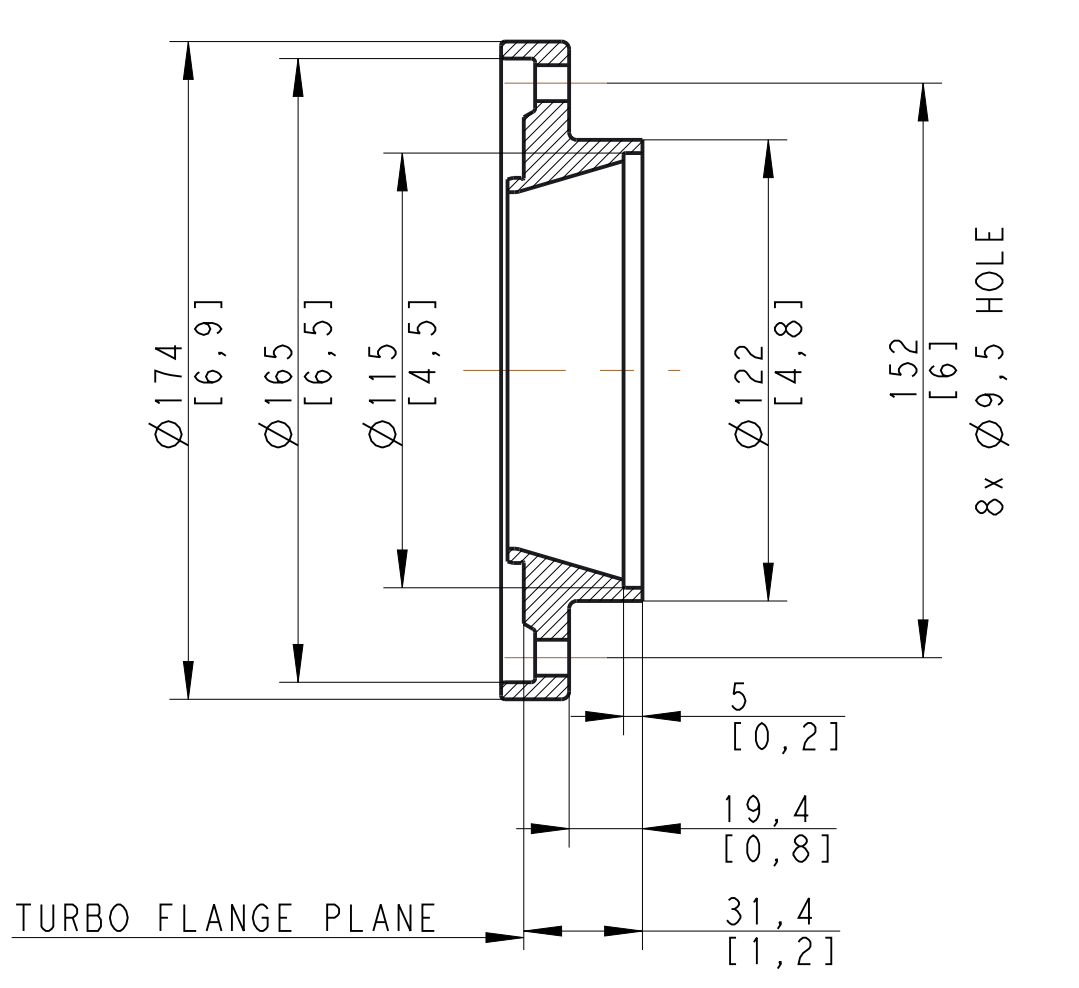
STEERING FLANGE 1:2



FLEXIBLE SUSPENSION 1:2



EXHAUST FLANGE 1:2



ITEM NO.	DESCRIPTION	NOTES
A	OIL DRAINPLUG GAUGE CONNECTION M16x1.5	TORQUE 30Nm
B	OIL TEMPERATURE GAUGE CONNECTION M16x1.5	TORQUE 30Nm
C	SUCTION OIL FILTER PLUG	TORQUE 120Nm
D	OIL DIPSTICK	
E	OIL BREATHER	
F	OIL FILTER	
G	OIL FILLING PLUG	TORQUE 90Nm
H	FLEXIBLE SUSPENSION	
I	FUEL CONNECTION INLET 1/4"-18 NPTF	
J	FUEL CONNECTION OUTLET 1/4"-18 NPTF	
K	SEA WATER INLET CONNECTION FOR 63 mm (2 1/2") I.D. HOSE	
L	HOSE WET EXHAUST I.D. 8" (205mm)	

FOR MORE DETAILS REFER BELOW DRAWINGS
 I. D13B-B MP BOBTAIL DRAWING

SCALE 1:5

SYMBOLS, DESIGNATIONS AND GENERAL DRAWING METHODS STD 101-0005

Document title: **ENGINE DIMENSIONS D13C1-A MP REVERSING GEAR ZF4001V**

Document type: **DIMENSION DRAWING**

Clear domain Document practice

VOLVO PENTA

Document No: **23903240** Issue index: **01** Sheet No: **1(11)**