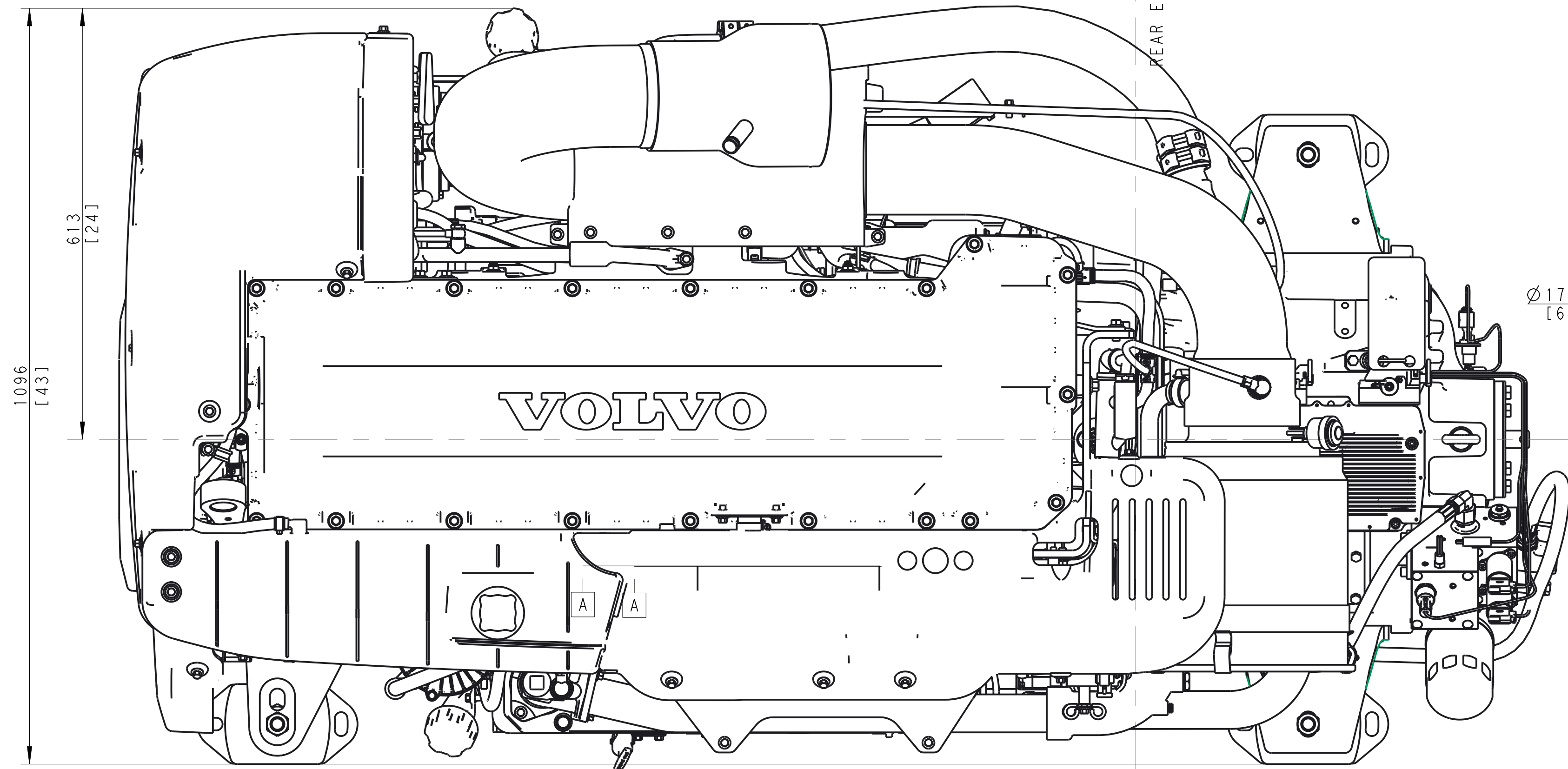
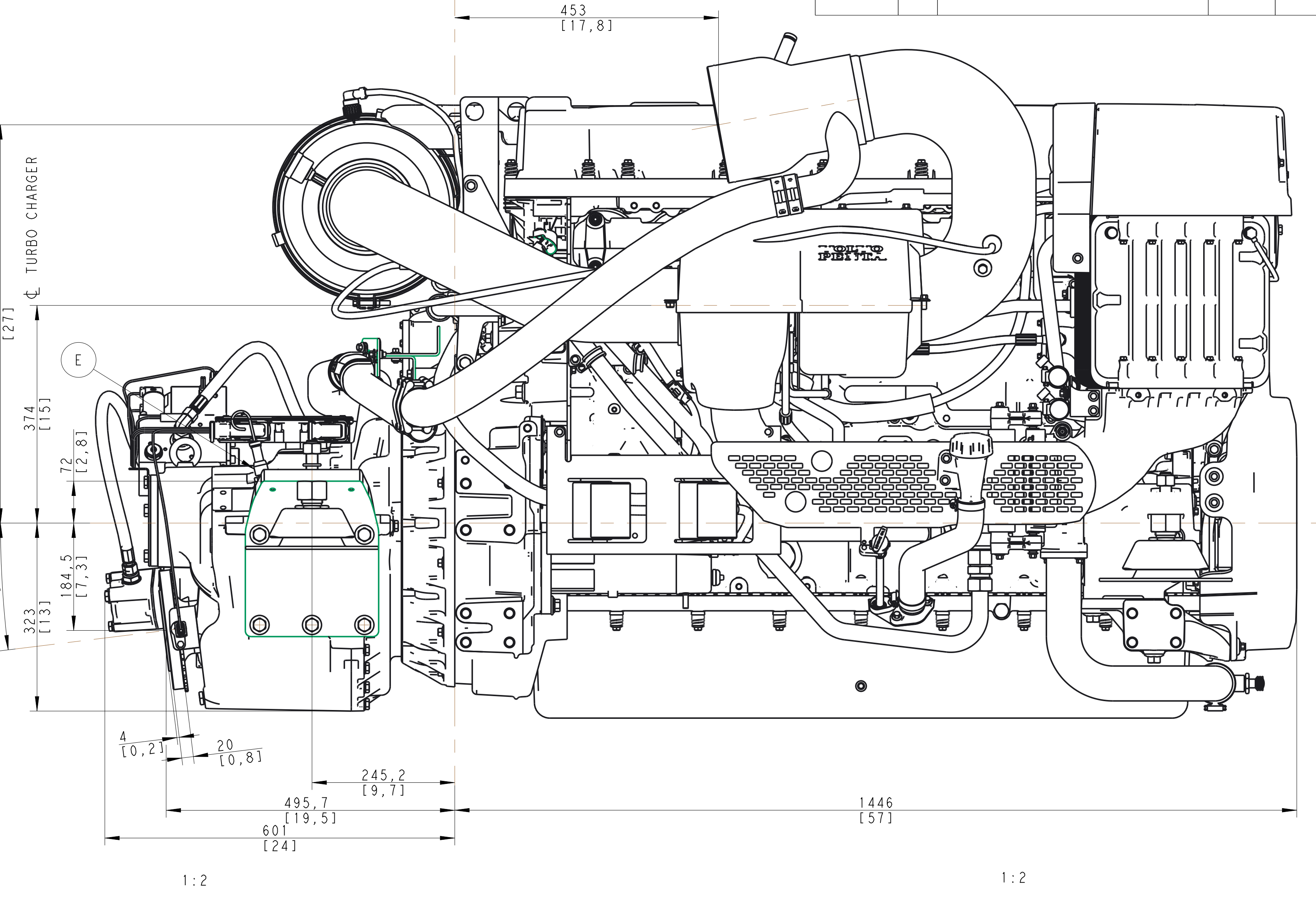
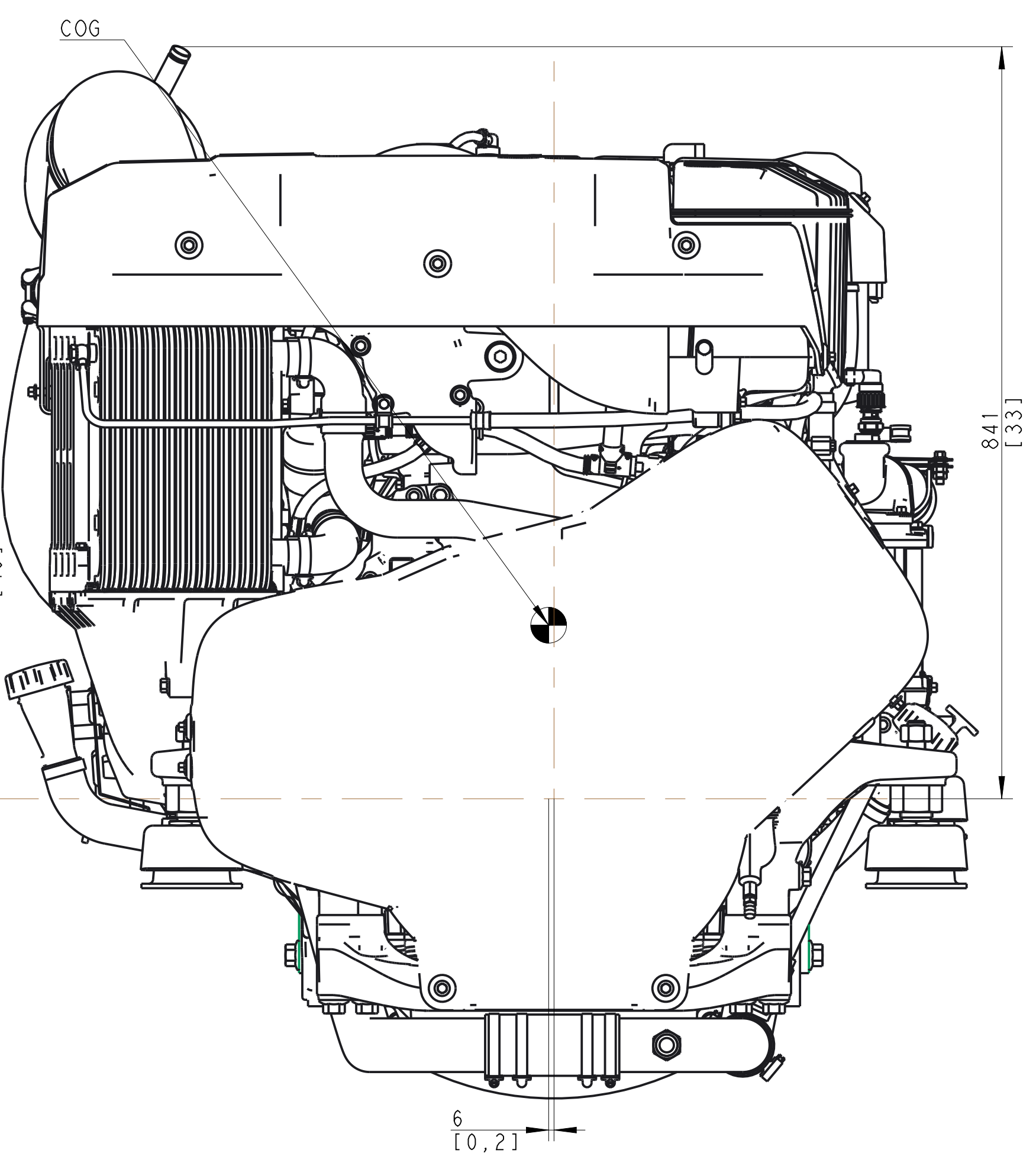
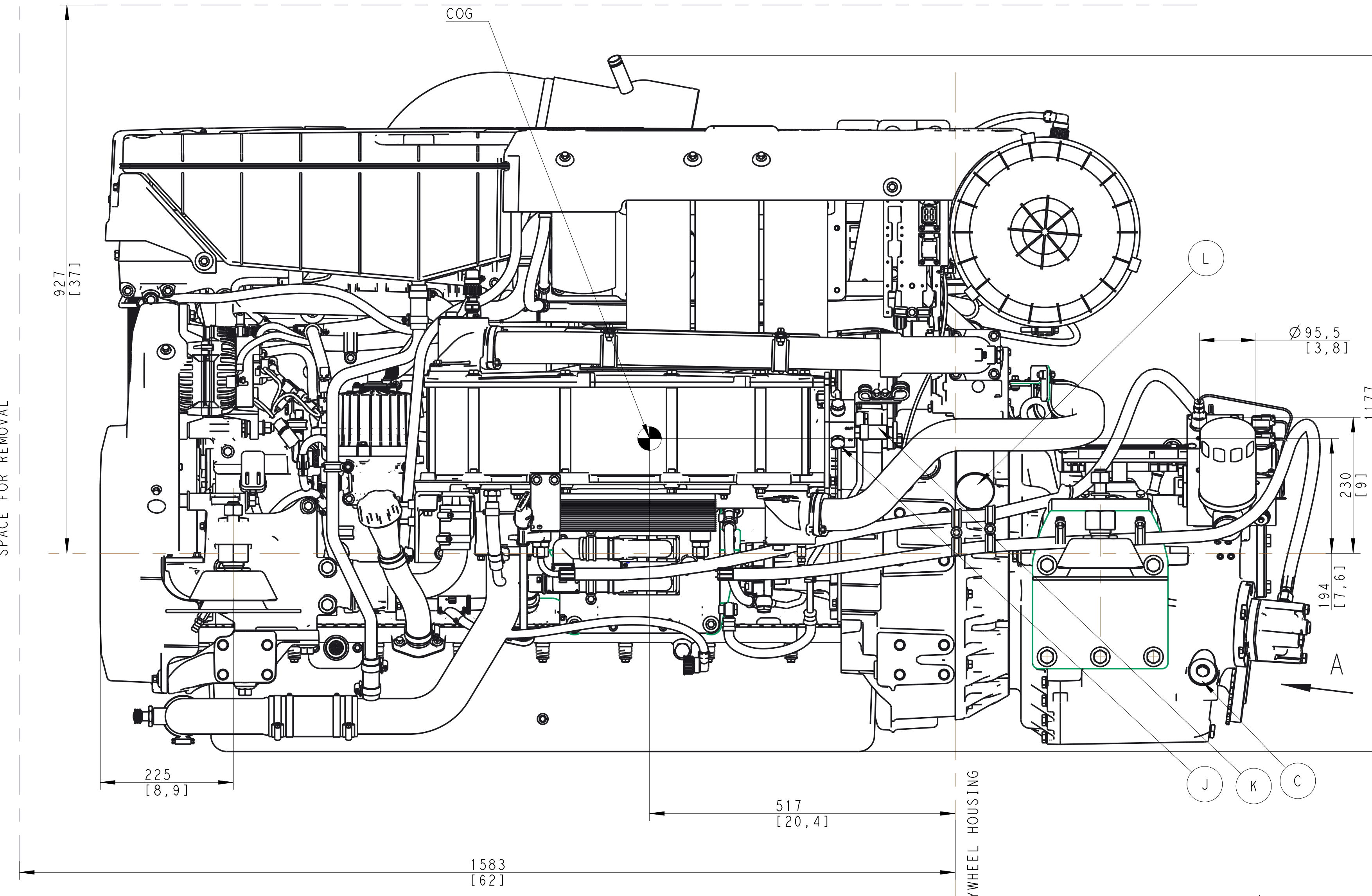
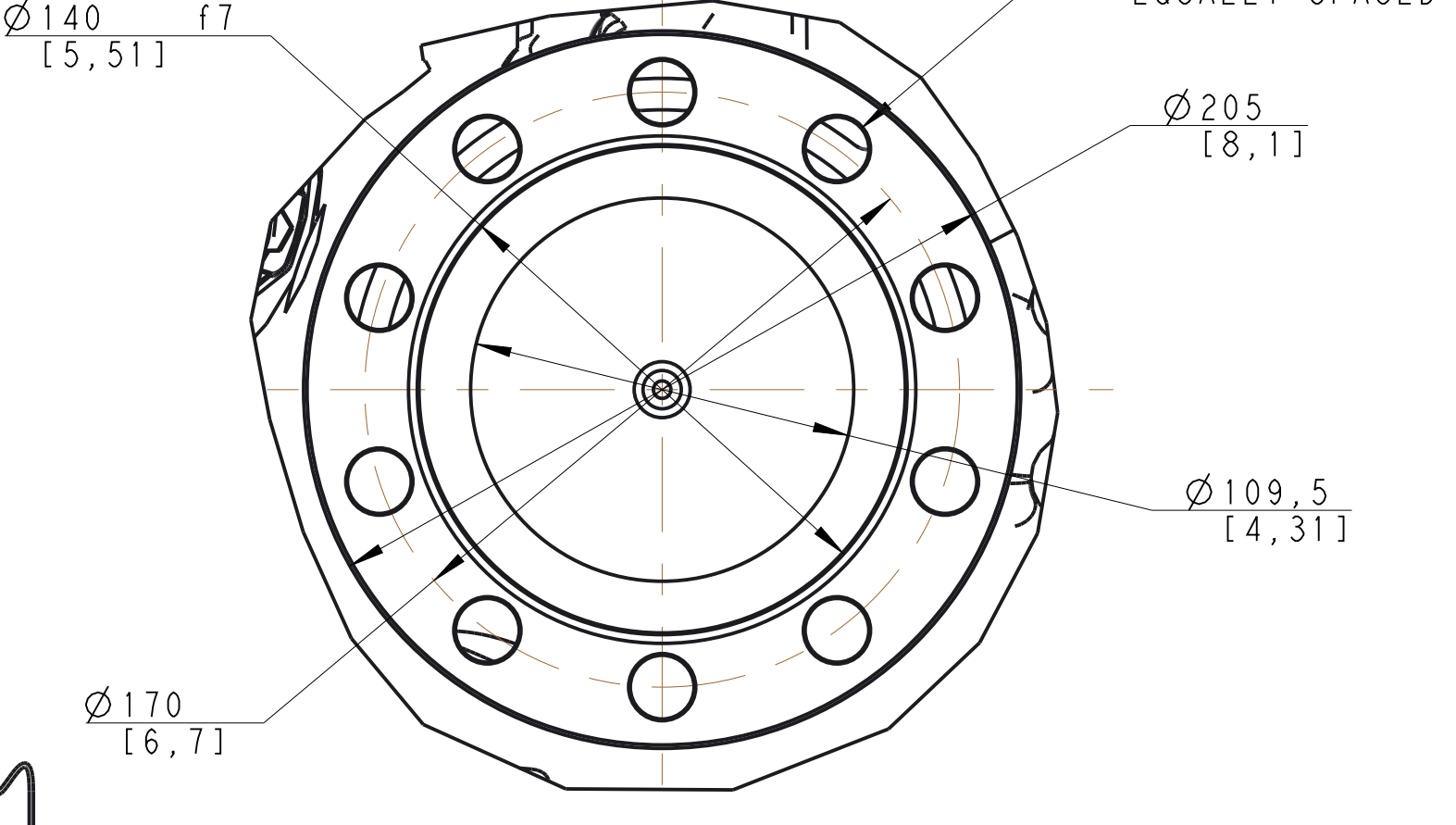


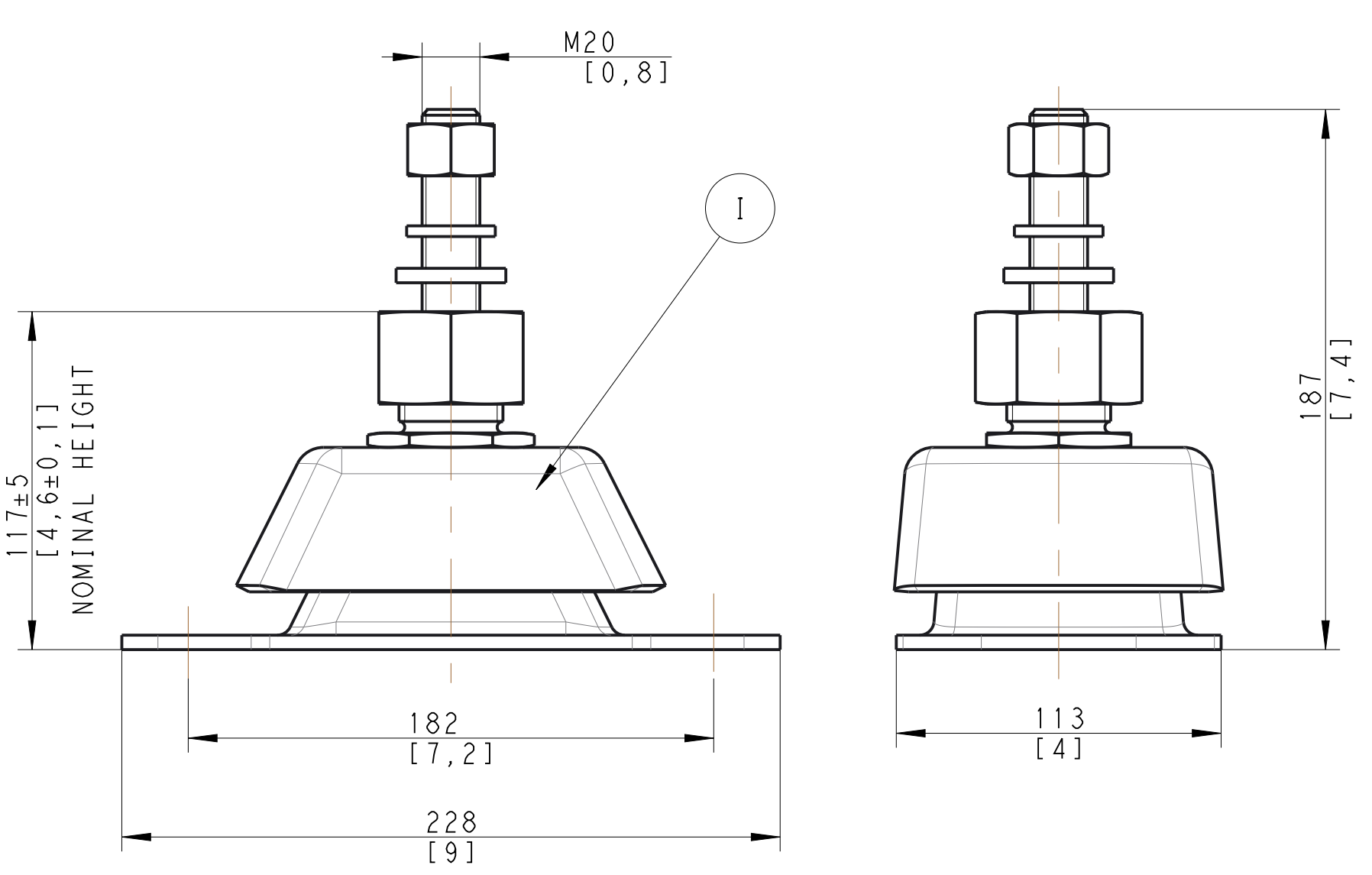
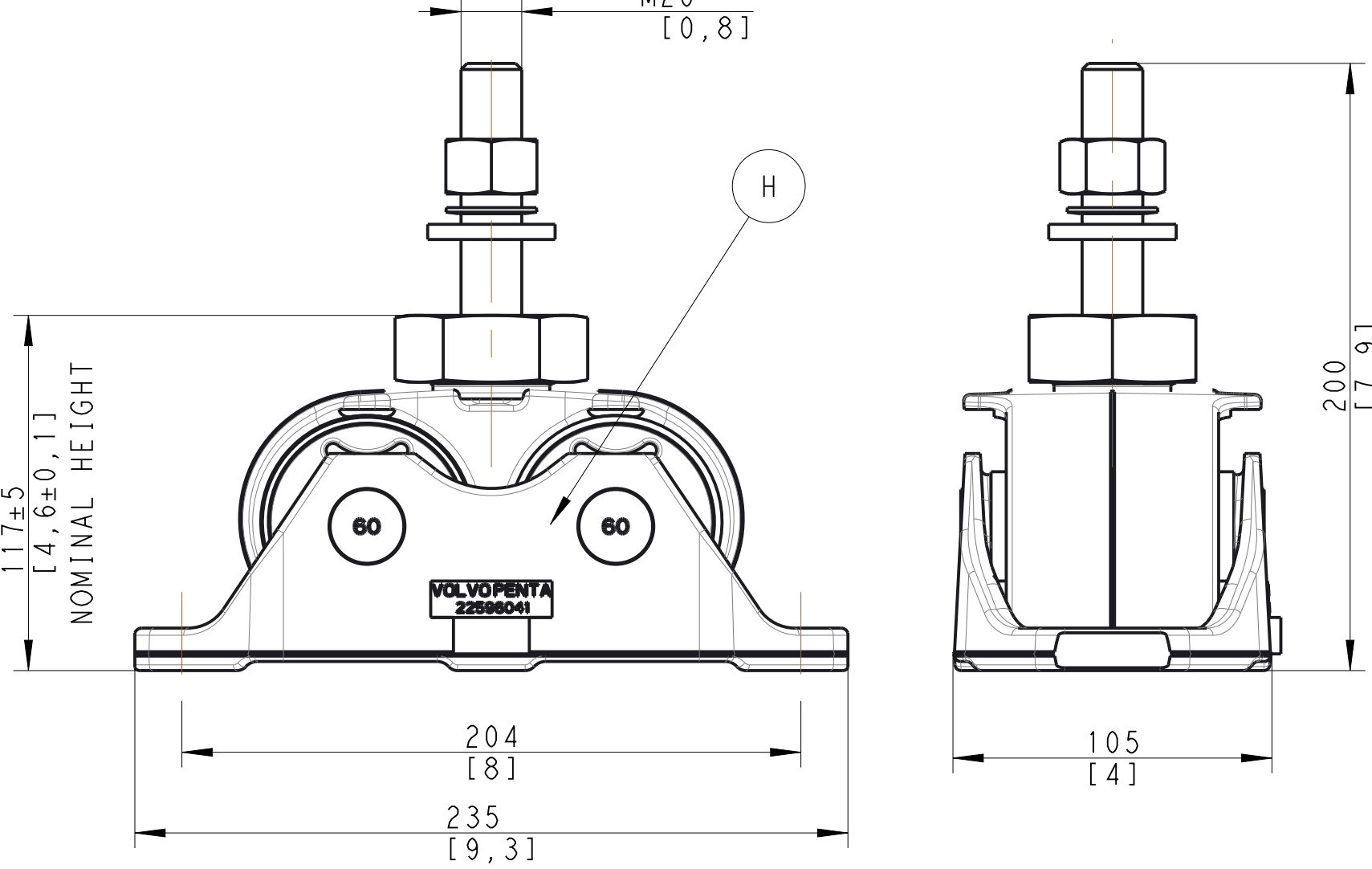
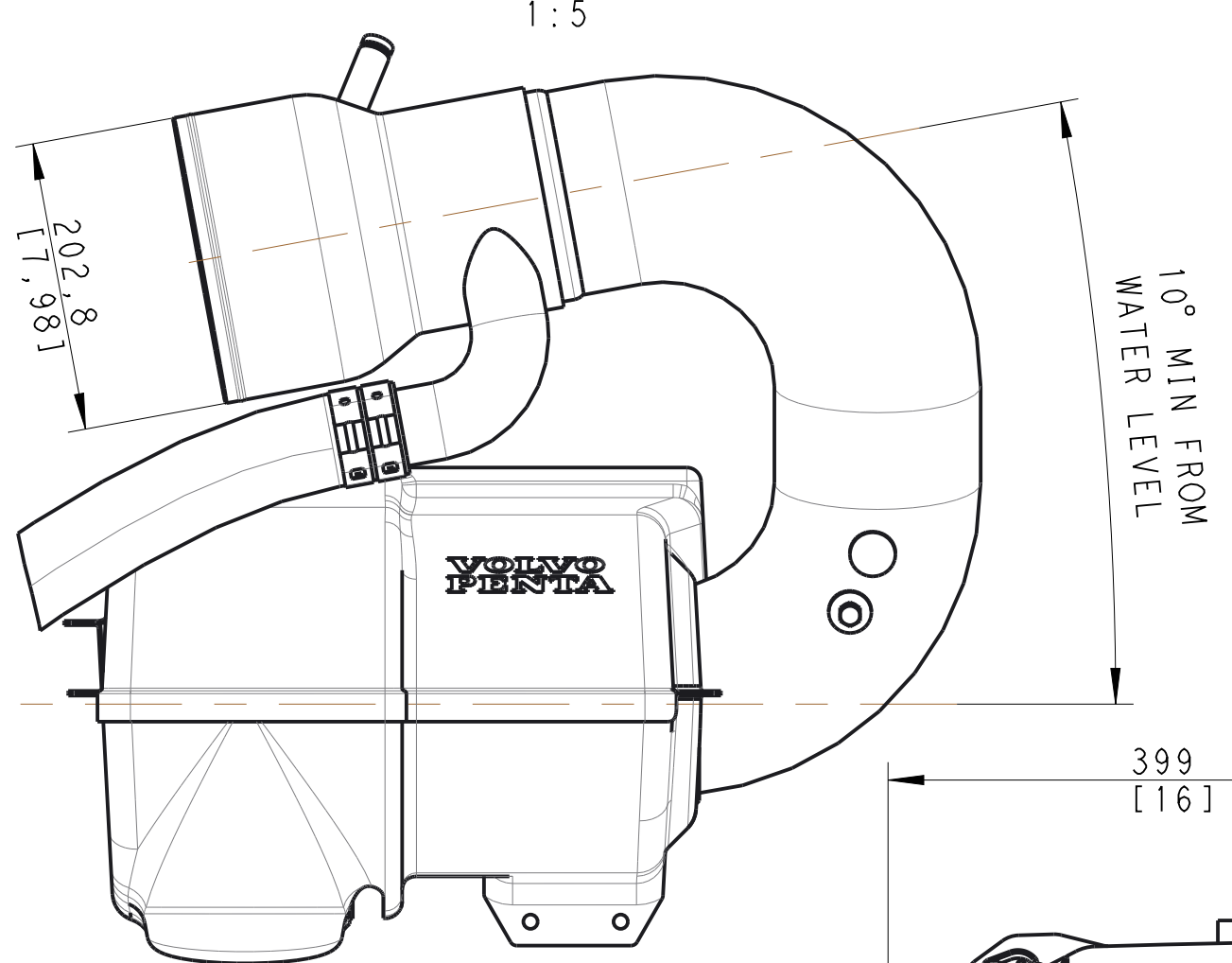
SPACE FOR REMOVAL OF VALVE COVER



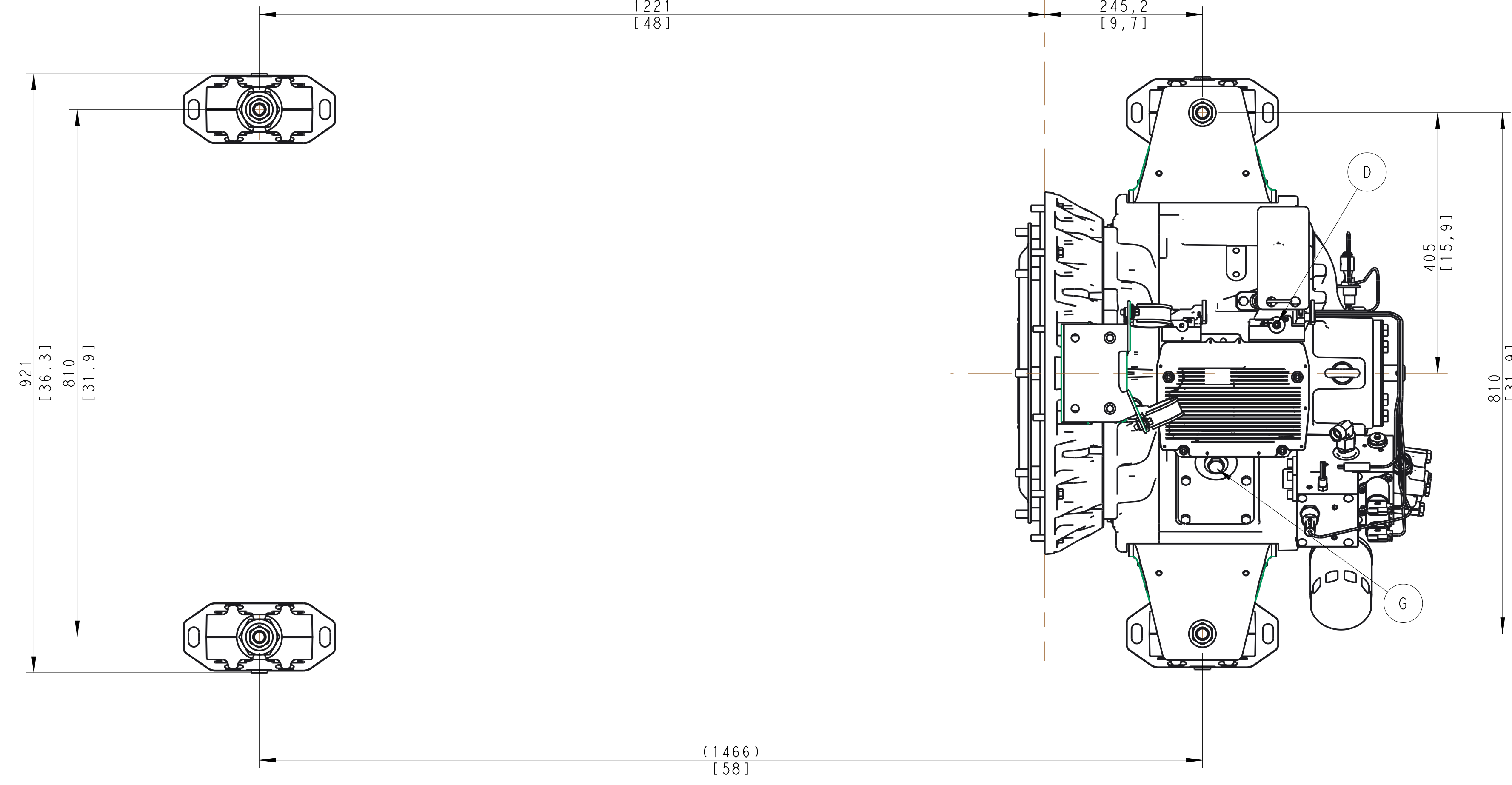
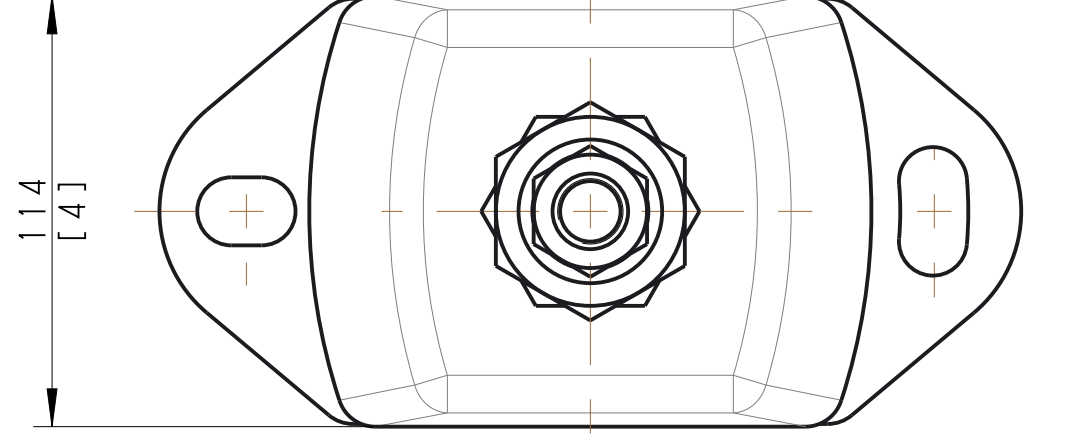
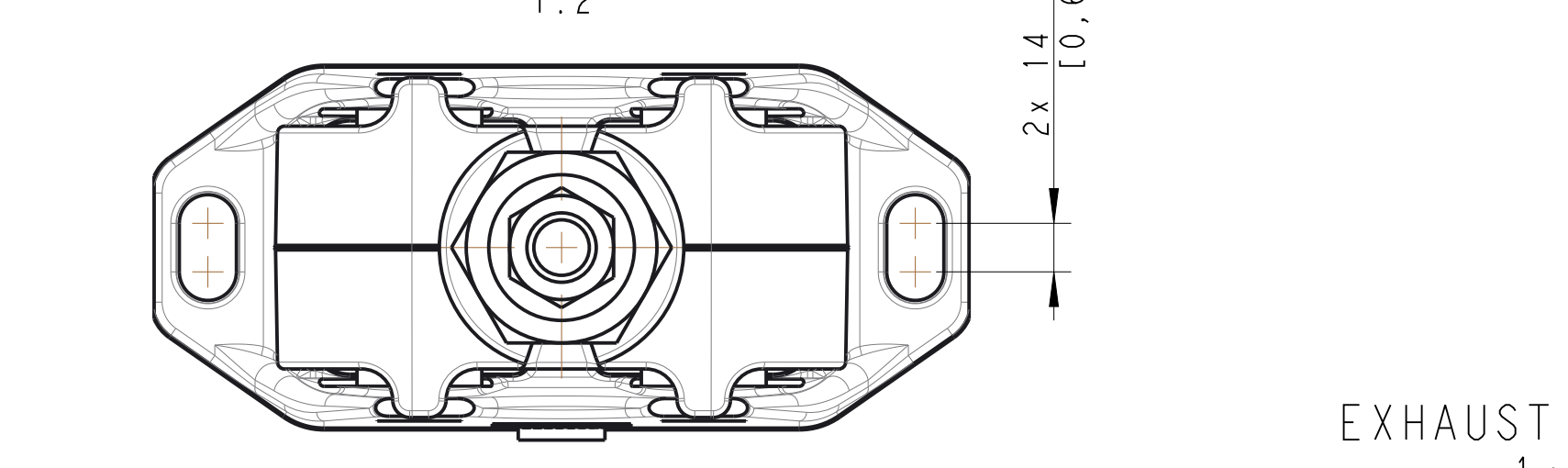
STEERING FLANGE
VIEW A
1:2



EXHAUST BEND
1:5

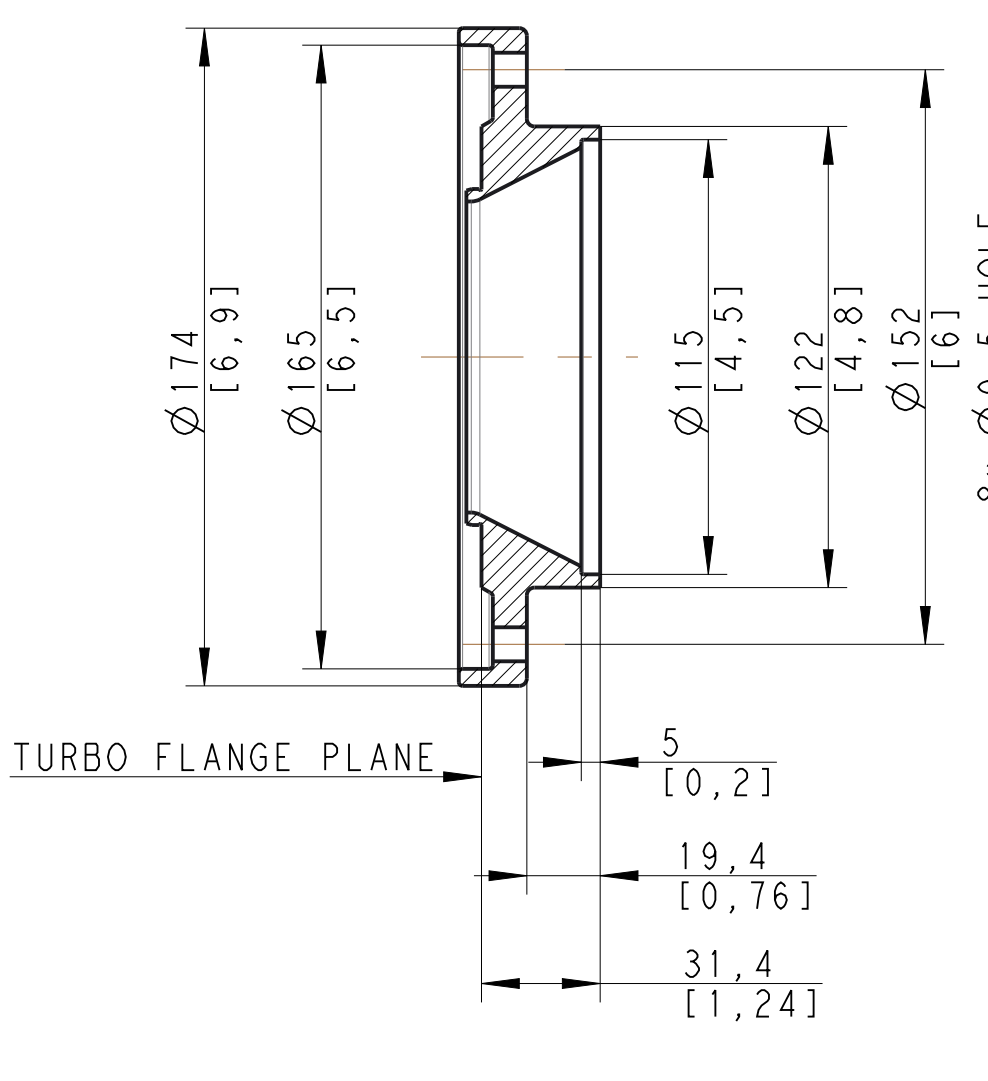
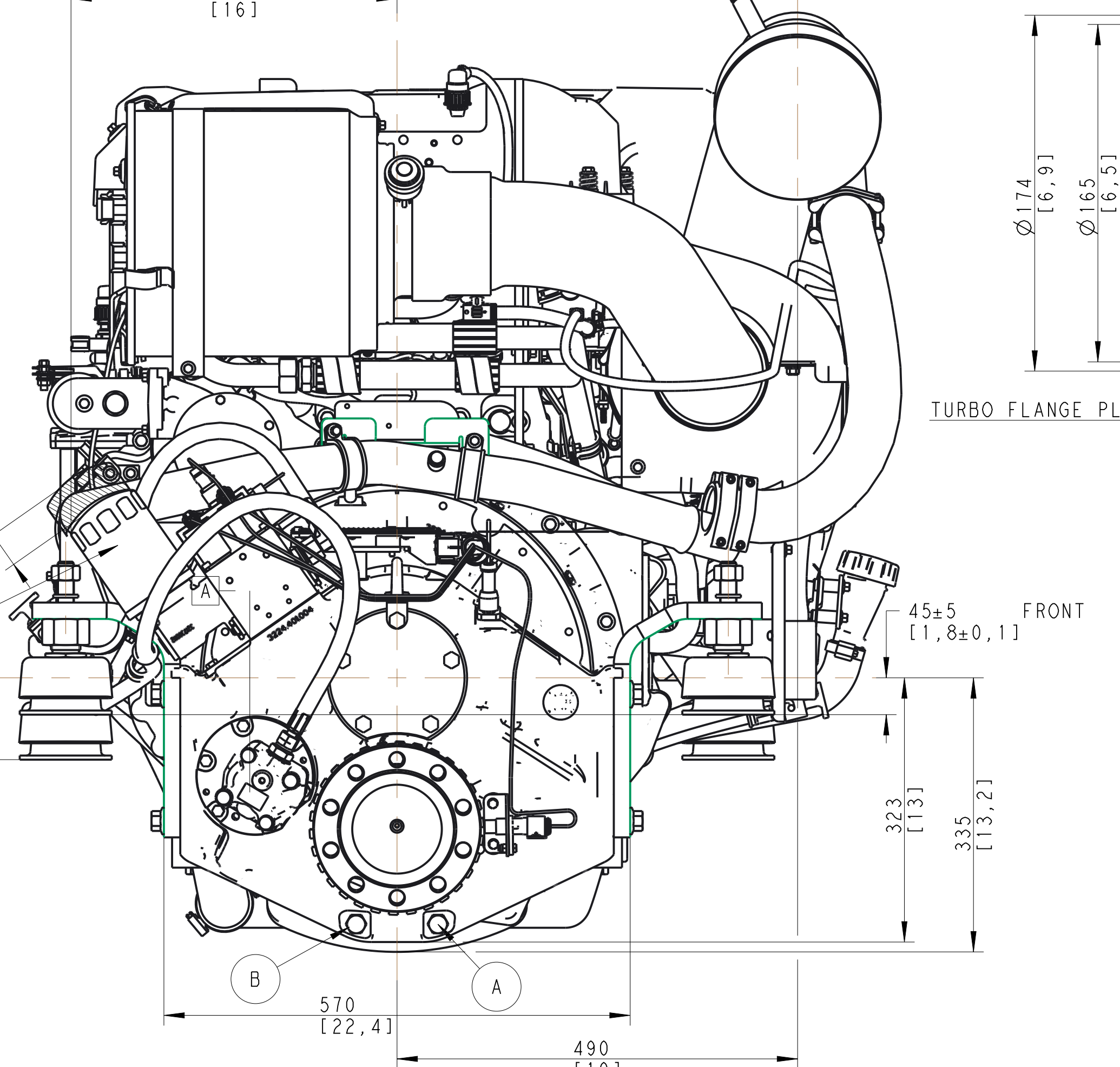


EXHAUST FLANGE
1:2



13-5
SPACE REQUIRED TO
REMOVE OIL FILTER

100±5 REAR
[4±0]



ITEM NO.	DESCRIPTION	NOTES
A	OIL DRAINPLUG GAUGE CONNECTION M16x1.5	TORQUE 30Nm
B	OIL TEMPERATURE GAUGE CONNECTION M16x1.5	TORQUE 30Nm
C	SUCTION OIL FILTER PLUG	TORQUE 120Nm
D	OIL DIPSTICK	
E	OIL BREATHER	
F	OIL FILTER	
G	OIL FILLING PLUG	TORQUE 90Nm
H	FLEXIBLE SUSPENSION (TYPE-1)	
I	FLEXIBLE SUSPENSION (TYPE-2)	
J	FUEL CONNECTION INLET 1/4"-18 NPTF	
K	FUEL CONNECTION OUTLET 1/4"-18 NPTF	
L	SEA WATER INLET, CONNECTION FOR 63 mm (2 1/2") I.D. HOSE	

FOR MORE DETAILS REFER BELOW DRAWING:
 D13C1-A MP BOBTAIL
 D13C3-A MP BOBTAIL

SCALE 1:5

SYMBOLS, DESIGNATIONS AND GENERAL DRAWING METHODS STD 101-0005

Document title: ENGINE DIMENSIONS
 D13C1-A MP/D13C3-A MP
 REVERSING GEAR ZF400
 Dimension Drawing

Document No: 23880292
 Issue Index: 02
 Sheet No: 1(11)

