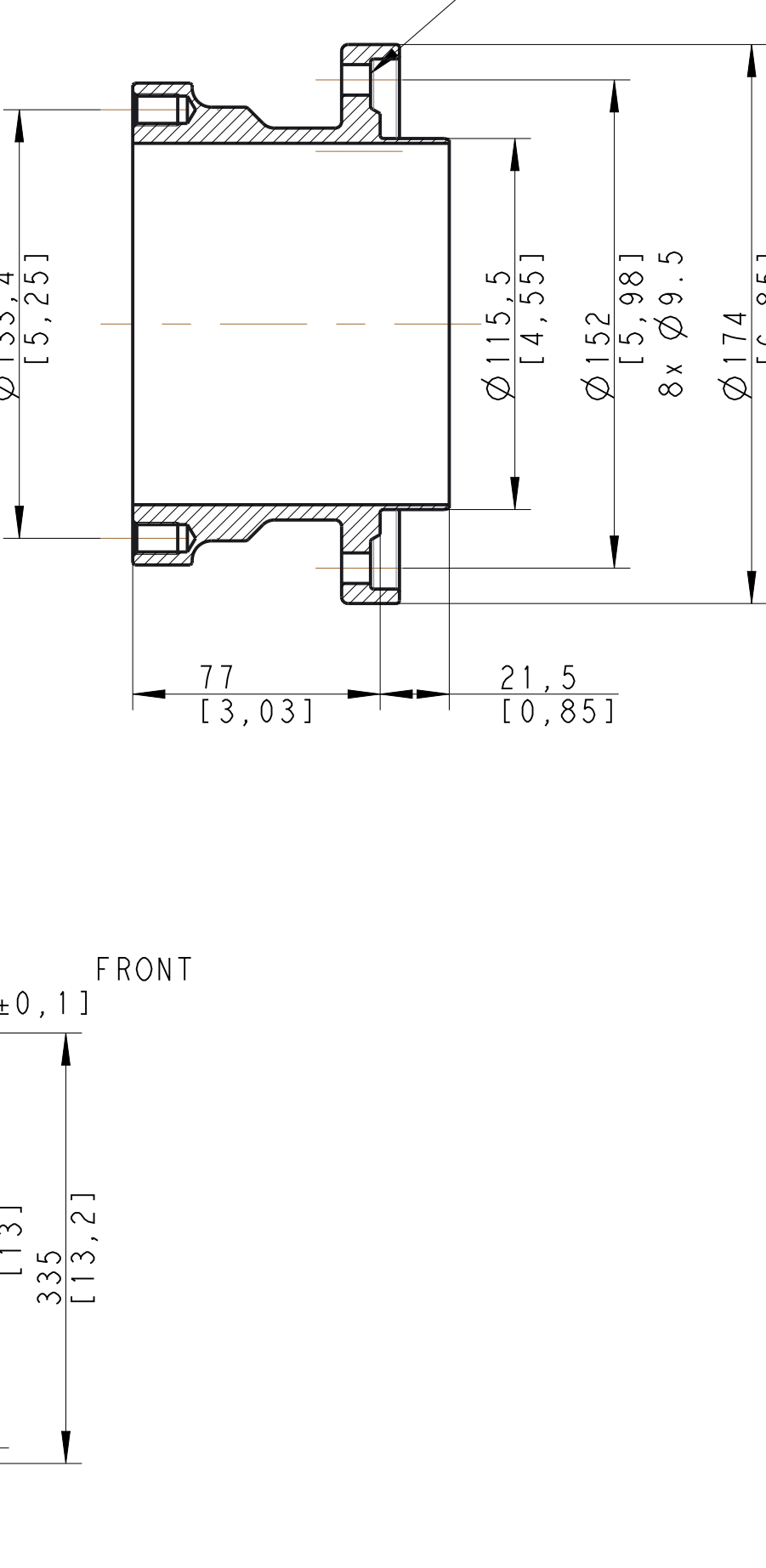
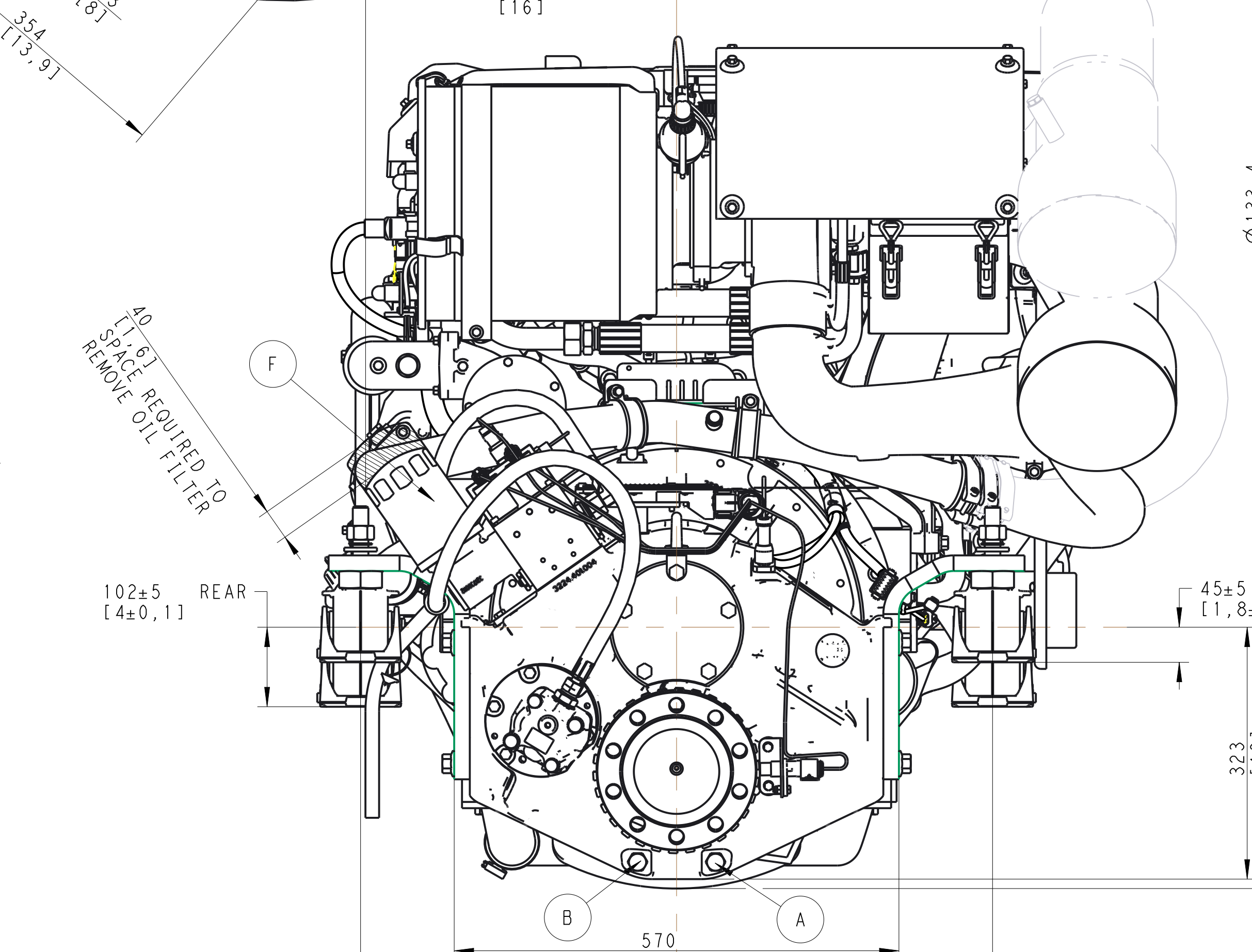
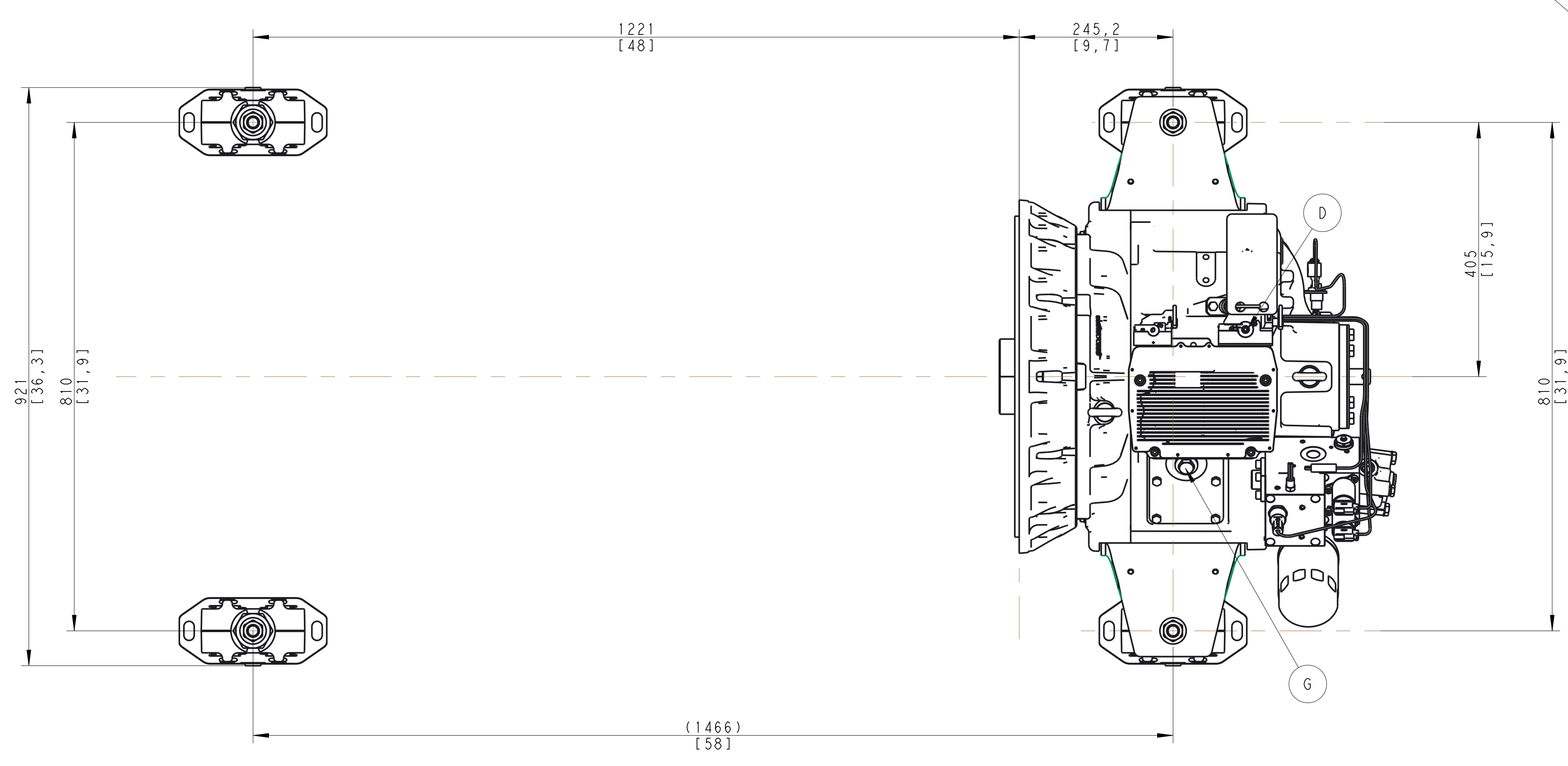
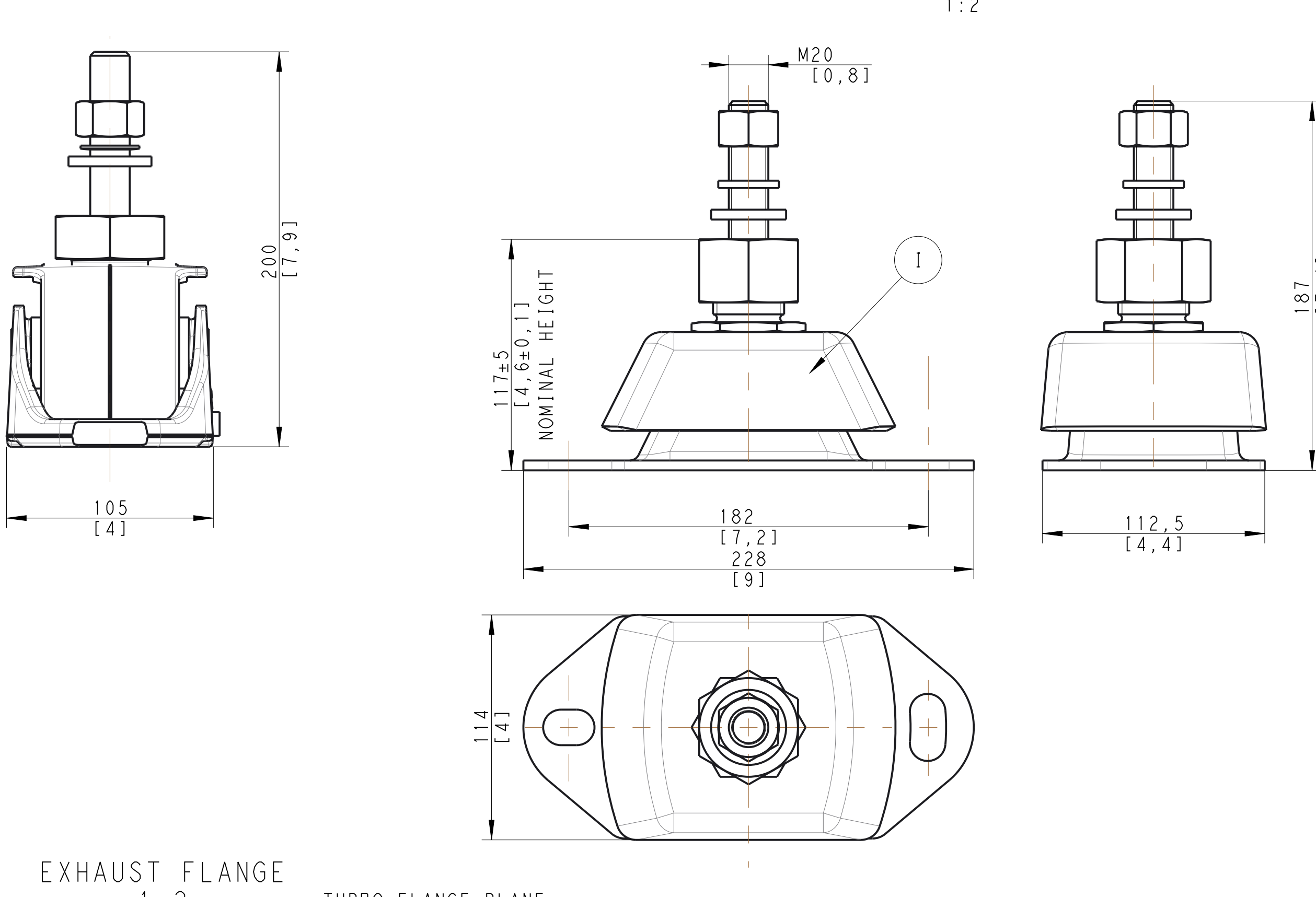
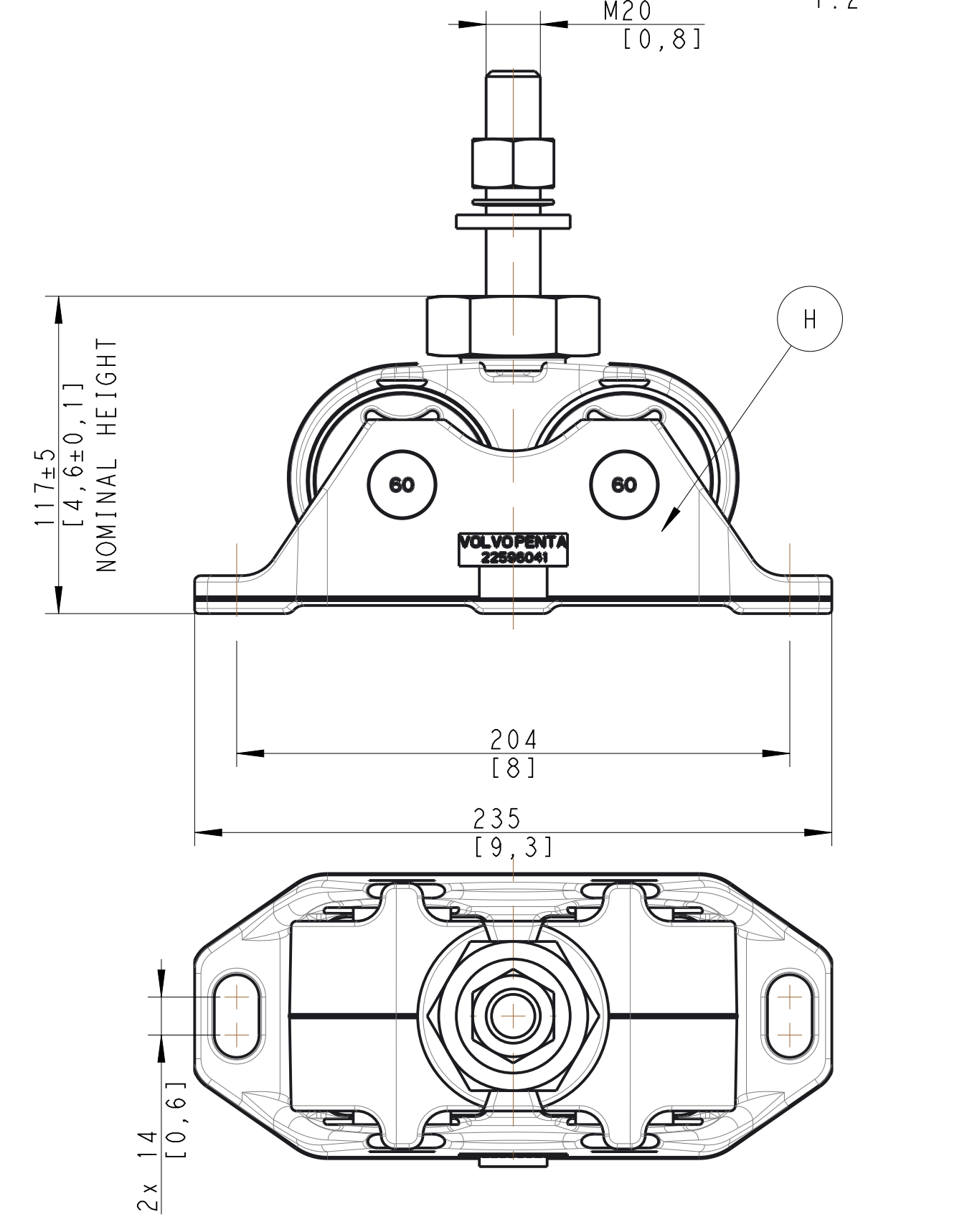
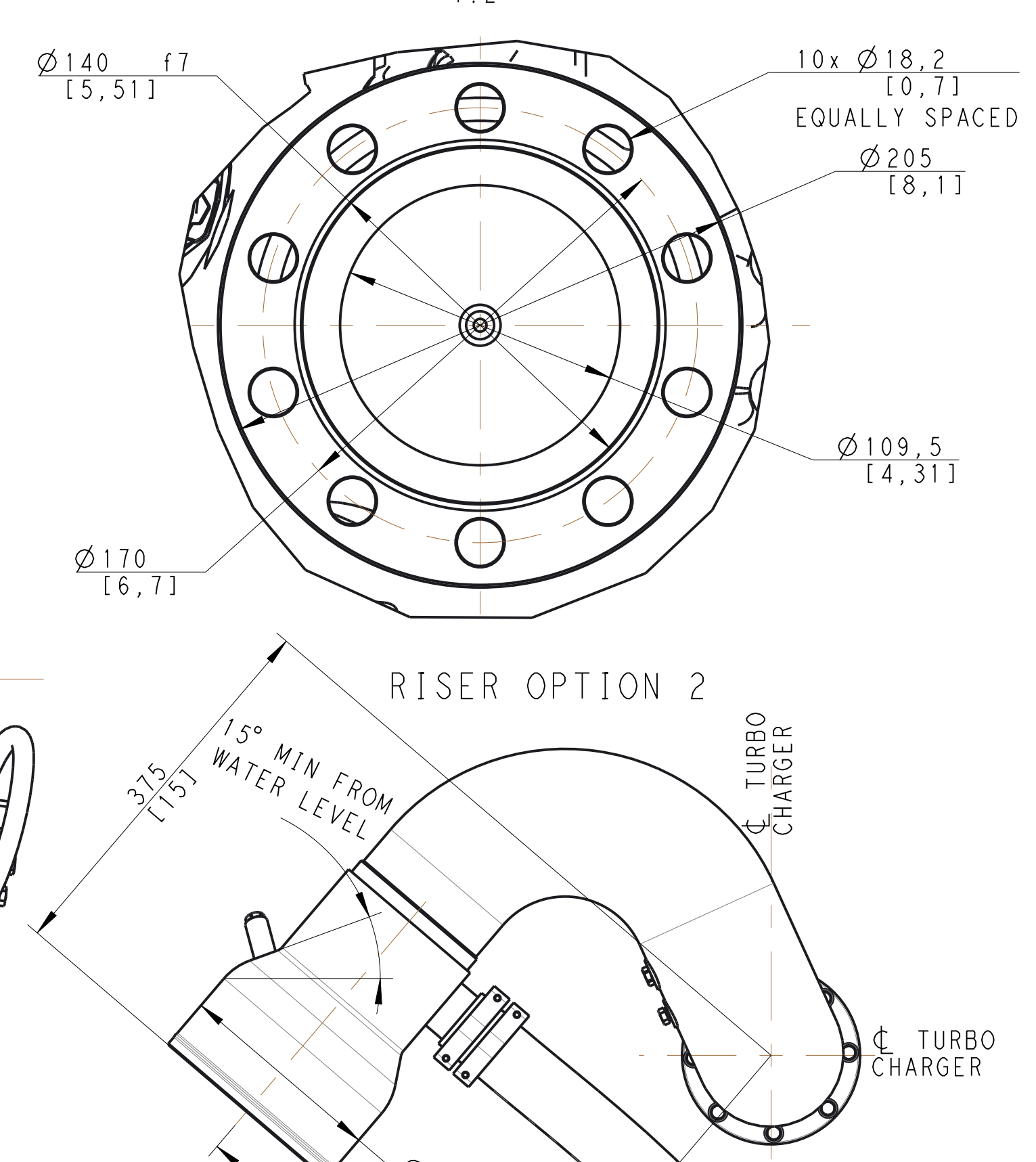
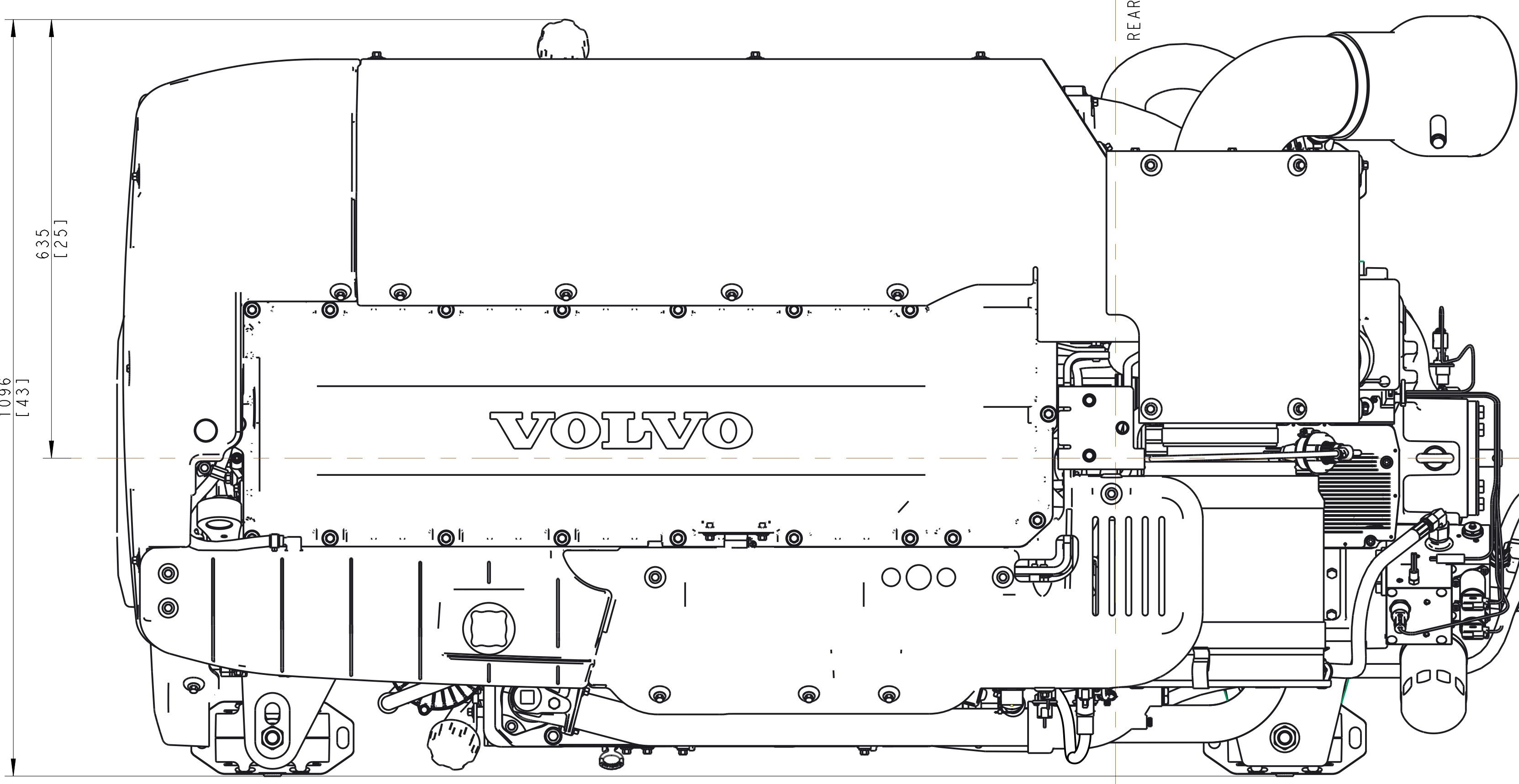
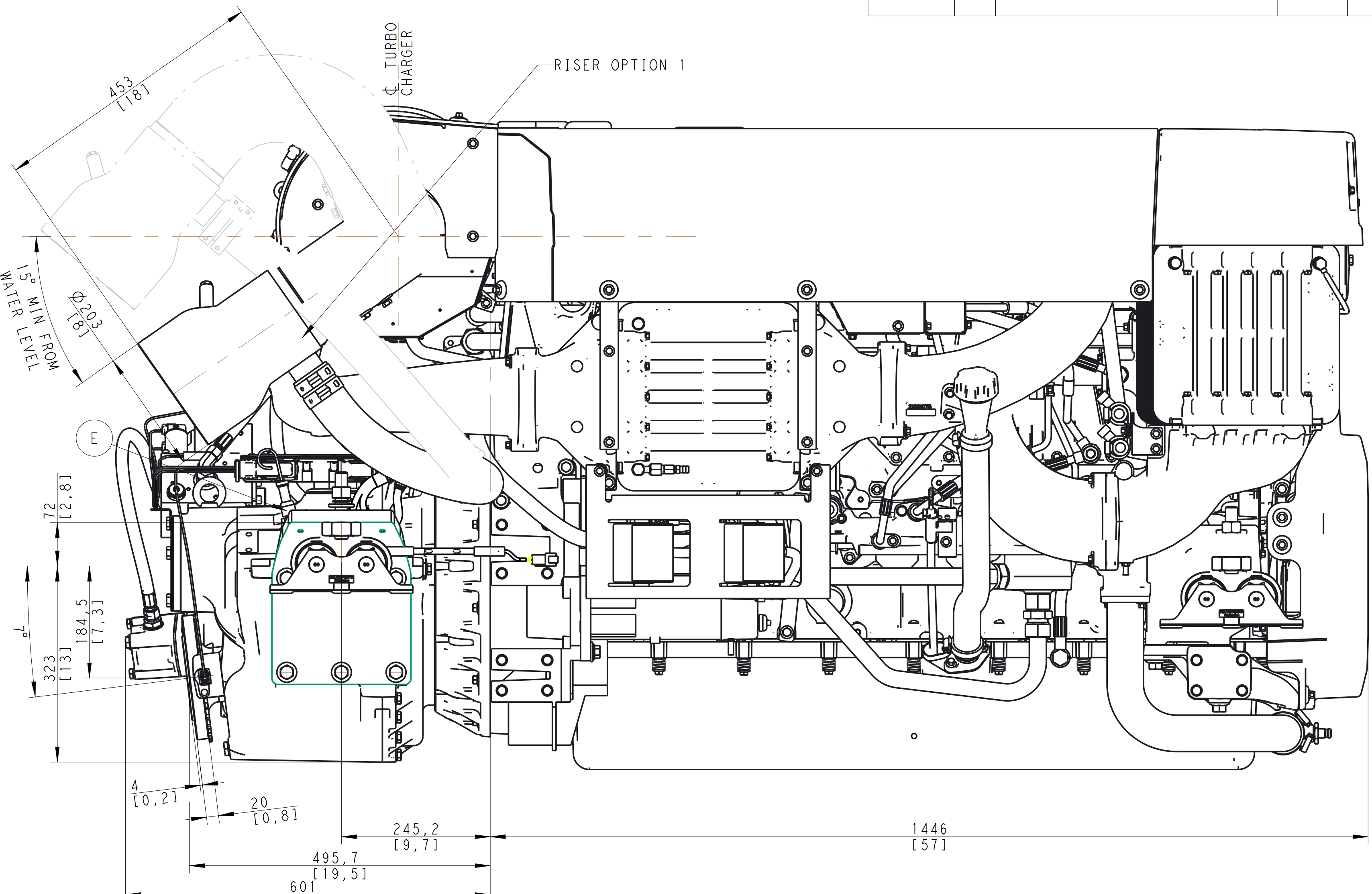
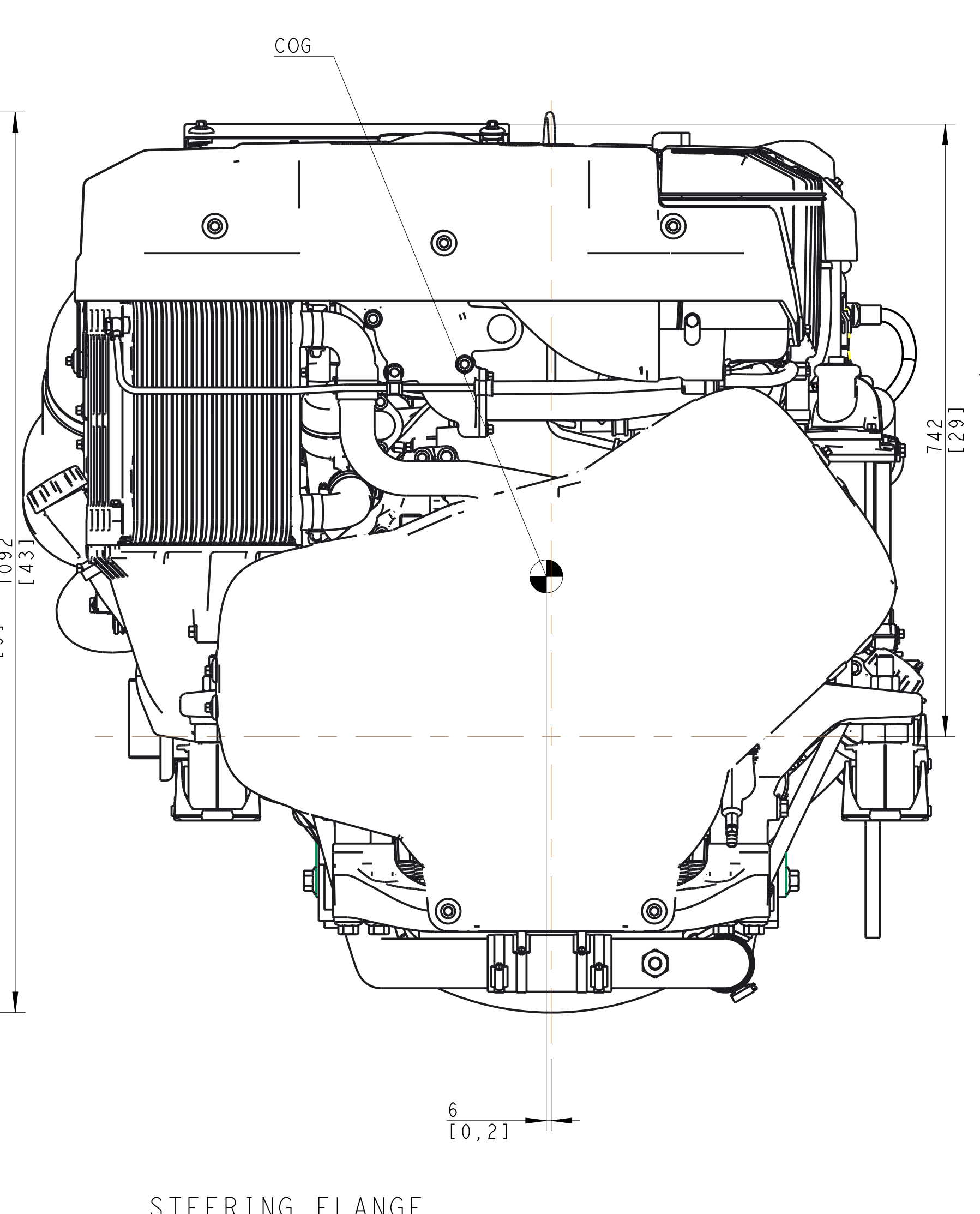
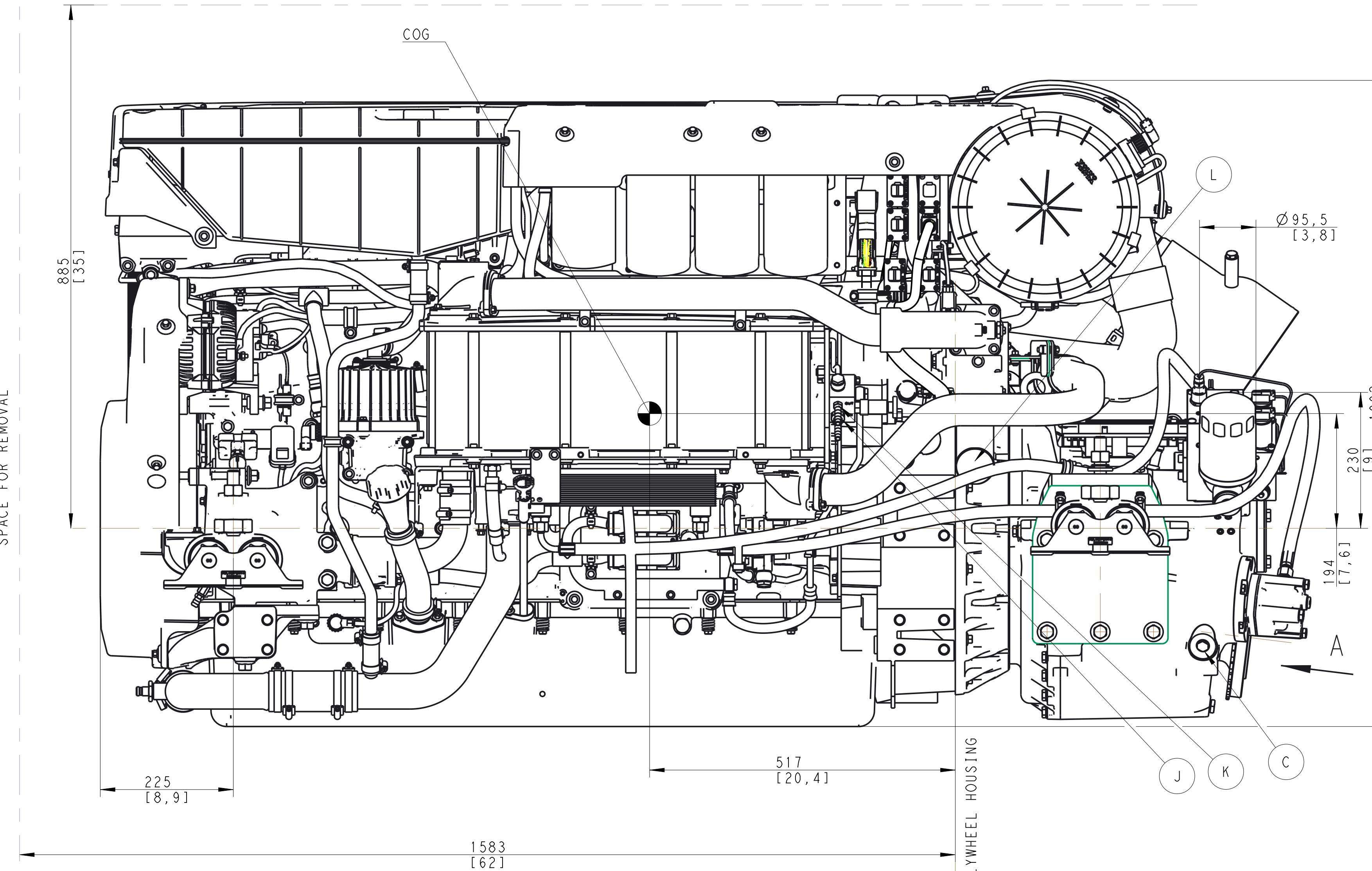


SPACE FOR REMOVAL OF VALVE COVER



ITEM NO.	DESCRIPTION	NOTES
A	OIL DRAINPLUG GAUGE CONNECTION M16x1.5	TORQUE 30Nm
B	OIL TEMPERATURE GAUGE CONNECTION M16x1.5	TORQUE 30Nm
C	SUCTION OIL FILTER PLUG	TORQUE 120Nm
D	OIL DIPSTICK	
E	OIL BREATHER	
F	OIL FILTER	
G	OIL FILLING PLUG	TORQUE 90Nm
H	FLEXIBLE SUSPENSION (TYPE-1)	
J	FLEXIBLE SUSPENSION (TYPE-2)	
J	FUEL CONNECTION INLET 1/4"-18 NPTF	
K	FUEL CONNECTION OUTLET 1/4"-18 NPTF	
L	SEA WATER INLET CONNECTION FOR 63 mm (2 1/2") I.D. HOSE	

FOR MORE DETAILS REFER BELOW DRAWINGS
 1. D13B-B MP BOBTAIL DRAWING
 2. D13 1000HP BOBTAIL DRAWING
 SCALE 1:5

SYMBOLS, DESIGNATIONS AND GENERAL DRAWING METHODS STD 101-0005

Document Title
ENGINE DIMENSIONS
 D13B-A MP/1000HP
 REVERSING GEAR ZF400

Document Type
DIMENSION DRAWING

Clear domain Document practice

Document No
23846500

Issue Index
01

Sheet No
1(11)

